



Signature Series
Classic Auroralight



LMWL-SQ-FM-BLP
Shown w/ Optional [CHA] & [FM]



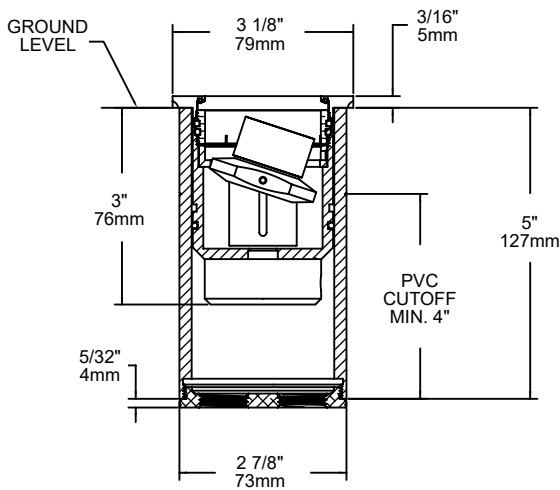
LMWL-SQ-FM-NAT
Shown w/ Optional [CHA] & [FM]

LMWL-SQ MICRO WELL

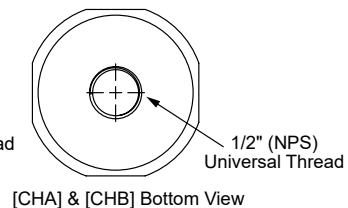
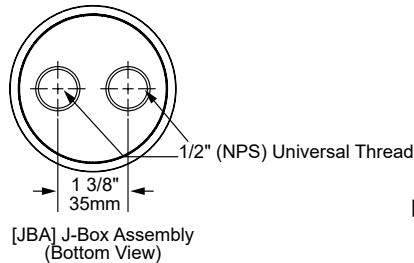
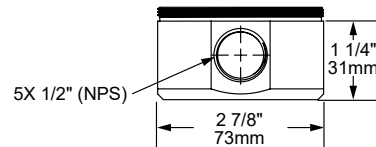
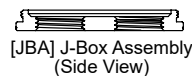
The Award-Winning **LMWL-SQ Micro Well** light is a high performance LED luminaire. It is packed with features yet remains small in size. The light source can be raised or lowered up to one inch, tilted 20 degrees side to side, and rotated a full 360 degrees to provide superior aiming. Featuring our SDLA "small-diameter, large-aperture" bezel.

Features include:

- 3 Watts up to 210 Lumens
- Cree LED™ XLAMP® (XP-L)
- Interchangeable UV Resistant, Self-Aligning and Self-Sealing Silicone (TIR) Optics (U.S. Patent No. 10,655,799) from 15° to 60°
- 2700K (80 & 90 CRI), 3000K (80 CRI), 4000K (80 CRI) or Amber 585-595nm
- Thermally Integrated® w/ Copper Core Technology®
- Dual Listed for Interior IC, and Exterior Wet Location Use
- 12V Integral Constant Current Driver (Remote 12V AC/DC Transformer Required)
- Dimmable to <10% (TRIAC/Forward Phase) via Compatible Transformer
- Compatible w/ 12V AC/DC MLV or ELV Transformers
- Drive-over Rated up to 6,000 lbs.
- Solid Brass Construction



2 1/2" SCH.40 PVC Sleeve (Included)



WINNER
OF THE
INNOVATION
AWARD

LIGHTFAIR
INTERNATIONAL

COPPER
CORE
TECHNOLOGY®

Copper Core® is a registered trademark of Auroralight. It is synonymous with the mark of quality and integrity. It means that our products are built upon a superior foundation of Solid Copper, ensuring every critical part functions seamlessly together Thermally integrated® one component to the next. Auroralight manufactured without compromise, engineered with passion, in the USA.



12V



SEE NEXT PAGE FOR ORDERING INFORMATION



LMWL-SQ MICRO WELL

Prefix

ORDERING GUIDE: **LMWL-SQ** L (LED) MWL (MICRO WELL LIGHT) SQ (SQUARE)

☐ INDICATES REQUIRED FIELD ☐ INDICATES OPTIONAL FIELD ☒ INCLUDED IN BASE PRICE [_] QUICK SPEC (See Below)

QUICK SPEC SKU **LMWL-SQ-W-27-H-JBA-NAT**

LMWL-SQ

OPTIC

STANDARD: ☒

[N] 15° Narrow

[M] 25° Medium

[W] 40° Wide

[WF] 60° Wide Flood

PLUS (\$):

[A] All Optics Kit

LED COLOR

[27] 2700K, 80 CRI ☒

[279] 2700K, 90CRI

[30] 3000K, 80 CRI

[40] 4000K, 80 CRI

[AMB] Amber

(585-595 nm)

NOTE: For other CCT and CRI options, contact factory

ACCESSORIES

(SELECT UP TO TWO)

[H] Hex Baffle

[L] Linear Spread

[P] Prismatic Lens

[MP] Micro Prismatic

[F] Frost (Diffusion)

[LB] Linear Baffle

[AR] Accessory Retainer

MOUNT

[JBA] 3" dia. J-Box Assembly w/ Aluminum Back Plate and (2) 1/2" Rear Knockouts ☒

[CHA] 3" dia. Conduit Hub, Aluminum w/ (4) 1/2" Side and (1) 1/2" Rear Knockout

[CHB] 3" dia. Conduit Hub, Brass w/ (4) 1/2" Side and (1) 1/2" Rear Knockout

MOUNT ACCESSORIES

[FM] Flush-Mount Adapter

[STAB] Stabilizer Accessory (Rebar Not Included)

FINISH

STANDARD:

[NAT] Natural ☒

PLUS (\$):

[BLP] Bronze Living Patina

[BLP-XD] BLP Extra Dark

PREMIUM (\$\$\$):

[NI] Nickel PVD

[BG] Black Gloss PVD

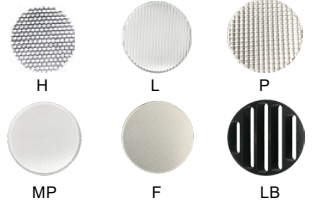
[BS] Black Satin PVD

[BZ] Bronze PVD

[BZ-XD] Dark Bronze PVD

[PC] Powder Coat Custom Color (Contact Factory for Color Options)

ACCESSORIES



MOUNTS



[JBA]
J-Box
Assembly
(Standard)



[CHA]
Aluminum
Conduit Hub



[CHB]
Brass
Conduit Hub

MOUNT ACCESSORIES



[STAB]
Stabilizer
Accessory



[FM]
Flush-Mount
Adapter

LMWL-SQ MICRO WELL

PHOTOMETRIC OVERVIEW

Information based on 3000K. To download more in-depth IES photometric data, visit auroralight.com/product/lmwl-sq-micro-well/

3000K 15° (NARROW) 163.6 LUMENS • CBCP 1813 AURORALIGHT LMWL-SQ-N-30		
30 FT	2.01	7.48
26 FT	2.68	6.48
22 FT	3.75	5.48
18 FT	5.60	4.49
14 FT	9.25	3.49
10 FT	18.1	2.49
6 FT	50.4	1.50
Distance From Fixture	Footcandles	Beam Width

3000K 25° (MEDIUM) 192.0 LUMENS • CBCP 921 AURORALIGHT LMWL-SQ-M-30		
30 FT	1.02	11.9
26 FT	1.36	10.3
22 FT	1.90	8.69
18 FT	2.84	7.11
14 FT	4.70	5.53
10 FT	9.21	3.95
6 FT	25.6	2.37
Distance From Fixture	Footcandles	Beam Width

3000K 40° (WIDE) 192.3 LUMENS • CBCP 471 AURORALIGHT LMWL-SQ-W-30		
30 FT	0.492	20.5
26 FT	0.656	17.7
22 FT	0.916	15.0
18 FT	1.37	12.3
14 FT	2.26	9.56
10 FT	4.43	6.83
6 FT	12.3	4.10
Distance From Fixture	Footcandles	Beam Width

3000K 60° (WIDE FLOOD) 134.7 LUMENS • CBCP 183 AURORALIGHT LMWL-SQ-WF-30		
30 FT	0.163	31.1
26 FT	0.218	27.0
22 FT	0.304	22.8
18 FT	0.454	18.7
14 FT	0.750	14.5
10 FT	1.47	10.4
6 FT	4.09	6.23
Distance From Fixture	Footcandles	Beam Width