

LSW16 POLARIS



The **LSW16 Polaris** wall light is a state-of-the-art high performance LED luminaire. The light source can be raised or lowered up to one inch, tilted 20 degrees side to side, and rotated a full 360 degrees to provide superior aiming. Machined entirely from solid brass bar and gasketed with durable silicone O-rings to ensure the fixture remains hermetically sealed under the most extreme conditions.

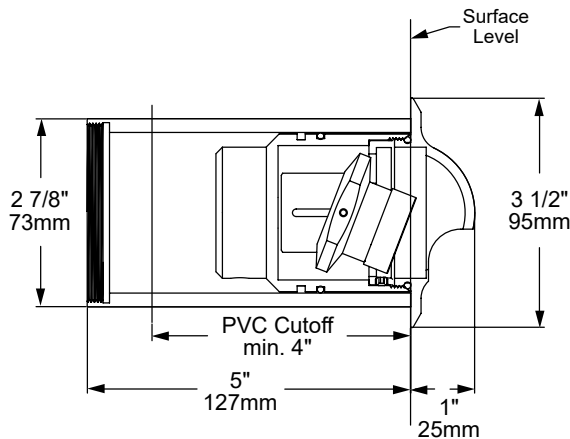
Features include:

- 3 Watts up to 82 Lumens
- Cree LED™ XLAMP® (XP-L)
- 2700K (80 & 90 CRI), 3000K (80 CRI), 4000K (80 CRI), or Amber (585-595nm)
- Thermally Integrated®
- Dual Listed for Interior IC, and Exterior Wet Location Use
- 12V Integral Constant Current Driver (Remote 12V AC/DC Transformer Required)
- Dimmable to <10% (TRIAC/Forward Phase) via Compatible Transformer
- Compatible w/ 12V AC/DC MLV or ELV Transformers
- Solid Brass Construction

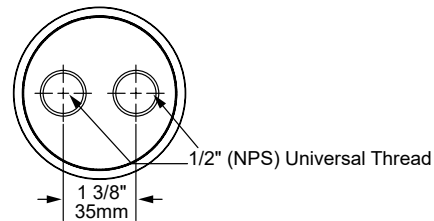


LSW16-BLP
Shown w/ optional
(CHA)

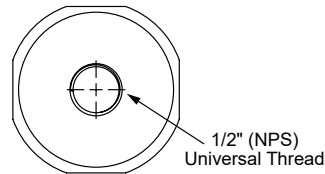
LSW16-NAT
Shown w/ optional
(CHA)



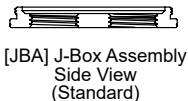
With 2 1/2" Sched. 40 PVC Sleeve (included)



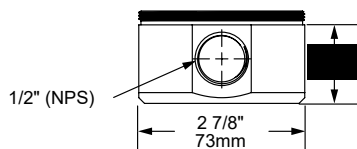
[JBA] Bottom View



[CHA] & [CHB] Bottom View



[JBA] J-Box Assembly
Side View
(Standard)



[CHA] & [CHB] Conduit Hub
Side View
(Optional)

COPPER CORE TECHNOLOGY®

Copper Core® is a registered trademark of Auroralight. It is synonymous with the mark of quality and integrity. It means that our products are built upon a superior foundation of Solid Copper, ensuring every critical part functions seamlessly together Thermally integrated® one component to the next. Auroralight manufactured without compromise, engineered with passion, in the USA.



12V



THERMALLY INTEGRATED



CREE LED POWERED



IDA DARK SKY APPROVED



IP67



IC RATED

SEE NEXT PAGE FOR ORDERING INFORMATION

LSW16 POLARIS



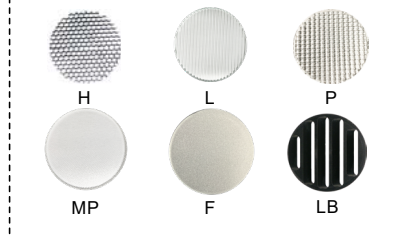
ORDERING GUIDE: ^{Prefix} **LSW16** L (LED) SW (STEP/WALL LIGHT) 16 (SERIES)

☐ INDICATES REQUIRED FIELD ☐ INDICATES OPTIONAL FIELD ✓ INCLUDED IN BASE PRICE [_] QUICK SPEC (See Below)

QUICK SPEC SKU **LSW16-W-27-H-JBA-NAT**

| | | | | | |
|--|---|---|--|---|--|
| LSW16 | | | | | |
| <p>OPTIC</p> <p>STANDARD: ✓</p> <p>[N] 15° Narrow</p> <p>[M] 25° Medium</p> <p>[W] 40° Wide</p> <p>[WF] 60° Wide Flood</p> <p>PLUS (\$):</p> <p>[A] All Optics Kit</p> | <p>LED COLOR ✓</p> <p>[27] 2700K, 80 CRI</p> <p>[279] 2700K, 90 CRI</p> <p>[30] 3000K, 80 CRI</p> <p>[40] 4000K, 80 CRI</p> <p>[AMB] Amber (585-595nm)</p> <p>NOTE: For other CCT and CRI options, contact factory. CCT 3000K or less required for Dark Sky compliance.</p> | <p>ACCESSORIES</p> <p>[H] Hex Baffle</p> <p>[L] Linear Spread</p> <p>[P] Prismatic Lens</p> <p>[MP] Micro Prismatic</p> <p>[F] Frost (Diffusion)</p> <p>[LB] Linear Baffle</p> | <p>MOUNT</p> <p>[JBA] 3" dia. J-Box Assembly w/ Aluminum Back Plate and (2) 1/2" Rear Knockouts ✓</p> <p>[CHA] 3" dia. Conduit Hub, Aluminum w/ (4) 1/2" Side and (1) 1/2" Rear Knockout</p> <p>[CHB] 3" dia. Conduit Hub, Brass w/ (4) 1/2" Side and (1) 1/2" Rear Knockout</p> | <p>FINISH</p> <p>STANDARD:</p> <p>[NAT] Natural ✓</p> <p>PLUS (\$):</p> <p>[BLP] Bronze Living Patina</p> <p>[BLP-XD] BLP Extra Dark</p> <p>PREMIUM (\$\$\$):</p> <p>[NI] Nickel PVD</p> <p>[BG] Black Gloss PVD</p> <p>[BS] Black Satin PVD</p> <p>[BZ] Bronze PVD</p> <p>[BZ-XD] Dark Bronze PVD</p> <p>[PC] Powder Coat Custom Color (Contact Factory for Color Options)</p> | |

ACCESSORIES



MOUNTS

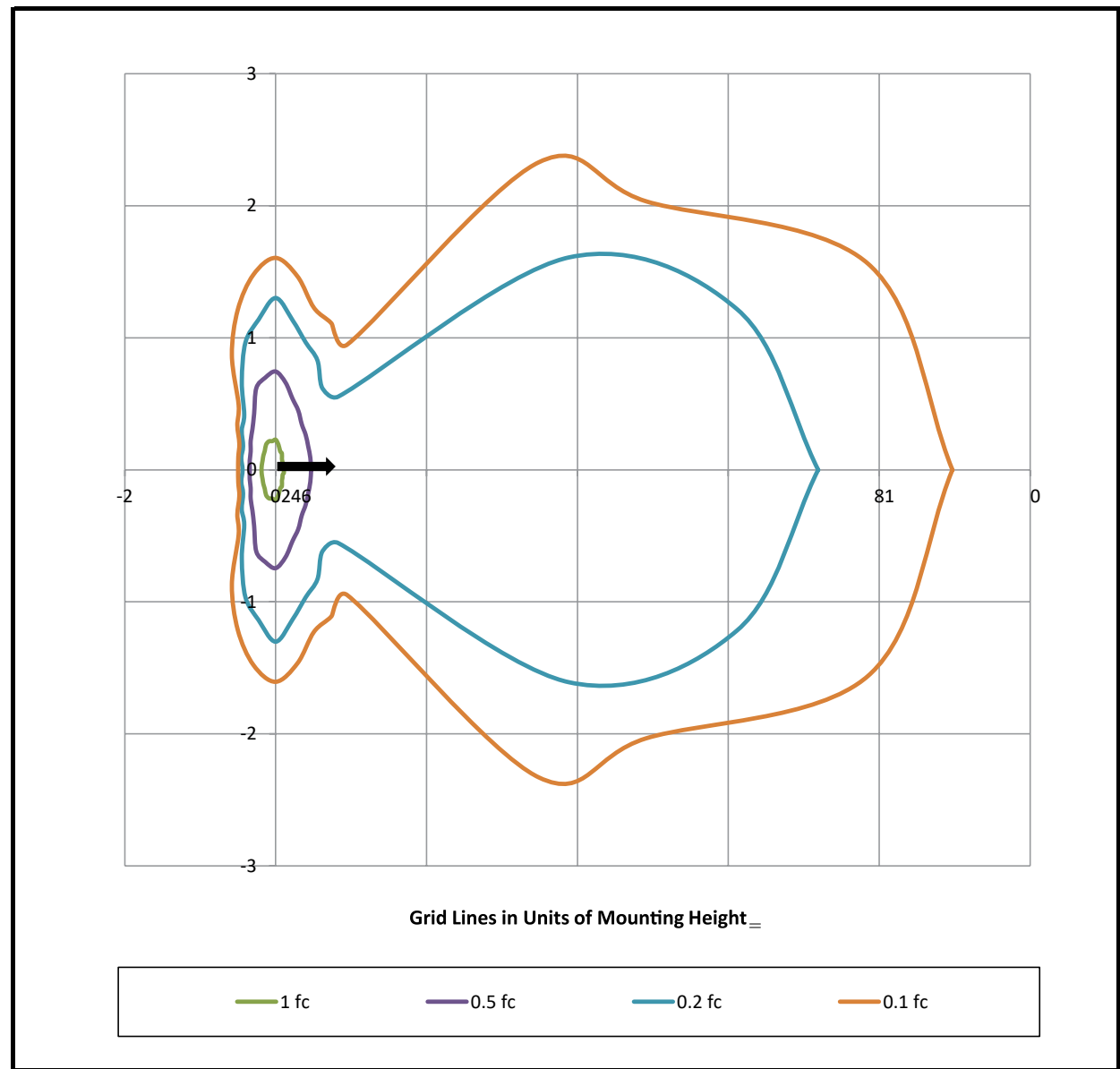


LSW16 POLARIS

PHOTOMETRIC OVERVIEW

To download more in-depth IES photometric data, visit auroralight.com/product/lsw16-polaris/

Mounting Height - 2 Feet



BUG Rating B0 U1 G0