



*Signature Series*  
Classic Auroralight

## LWL1 TERRA COTTA

The **LWL1 Terra Cotta** in-grade is a high flux, low wattage LED luminaire. Coupled to a brass body, our Thermally Integrated® LED module provides superior heat dissipation, longer life and higher performance. It is designed to discretely illuminate planted pots, low walls, columns or smaller architectural features from below, highlighting hanging foliage flowers or smaller details where it is not practical to use larger fixtures.

### Features include:

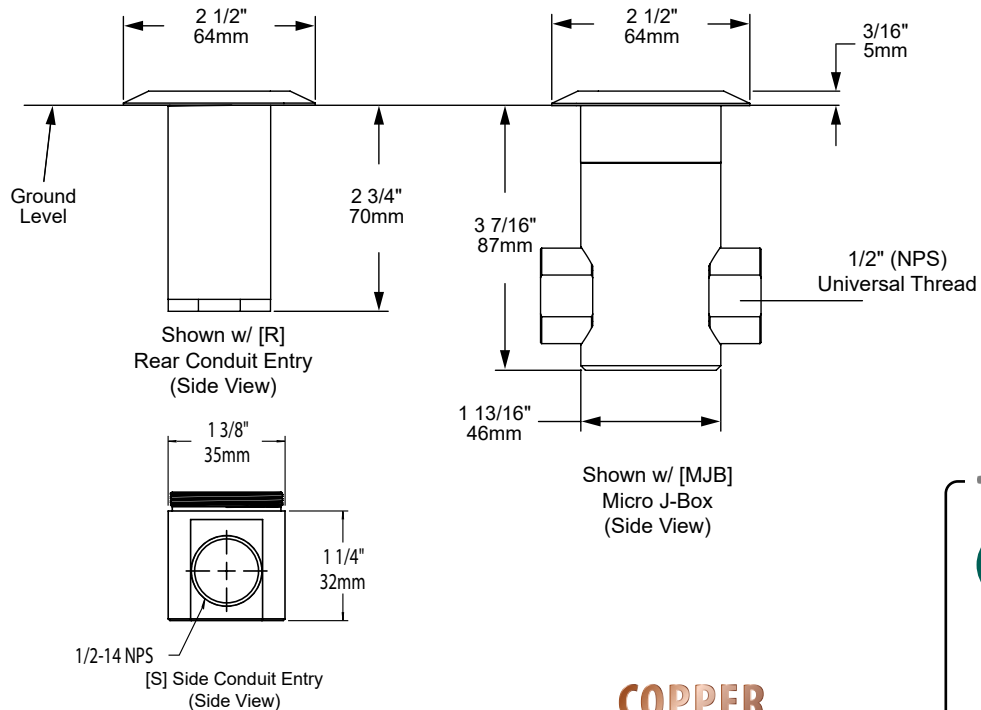
- 1.25 Watts up to 154 Lumens
- Cree LED™ XLAMP® (XP-L)
- Thermally Integrated® w/ Copper Core Technology®
- 2700K (80 & 90 CRI), 3000K (80 CRI), 4000K (80 CRI) or Amber 585-595nm
- 12V Integral Constant Current Driver (Remote 12V AC/DC Transformer Required)
- Dimmable to <10% (TRIAC/Forward Phase) via Compatible Transformer
- Compatible w/ 12V AC/DC MLV or ELV Transformers
- Drive-over Rated up to 6,000 lbs.
- Solid Brass & Copper Construction



LWL1-C-H-BLP  
Shown w/ [R]  
Mount



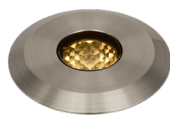
LWL1-C-H-NAT  
Shown w/ [R]  
Mount



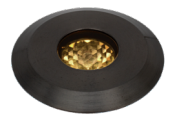
### FACEPLATE FINISHES



[NAT]



[NI]



[BLP-XD]



[BLP]

**COPPER  
CORE  
TECHNOLOGY®**

Copper Core® is a registered trademark of Auroralight. It is synonymous with the mark of quality and integrity. It means that our products are built upon a superior foundation of Solid Copper, ensuring every critical part functions seamlessly together Thermally integrated® one component to the next. Auroralight manufactured without compromise, engineered with passion, in the USA.



12V



THERMALLY  
INTEGRATED



POWERED



DRIVE-OVER  
RATED



IP67



IC  
RATED

**SEE NEXT PAGE FOR ORDERING INFORMATION**

## LWL1 TERRA COTTA



**ORDERING GUIDE:** <sup>Prefix</sup> **LWL1** L (LED) WL (WELL LIGHT) 1 (SERIES)

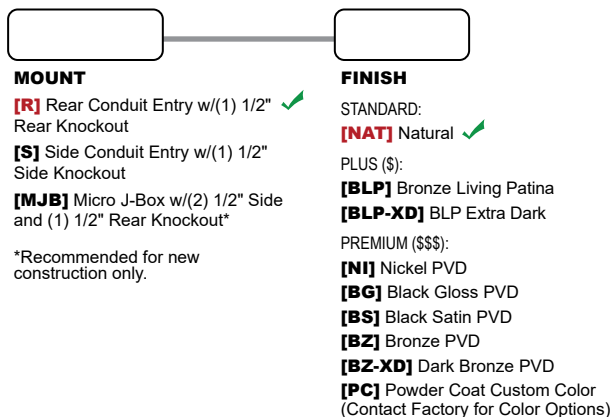
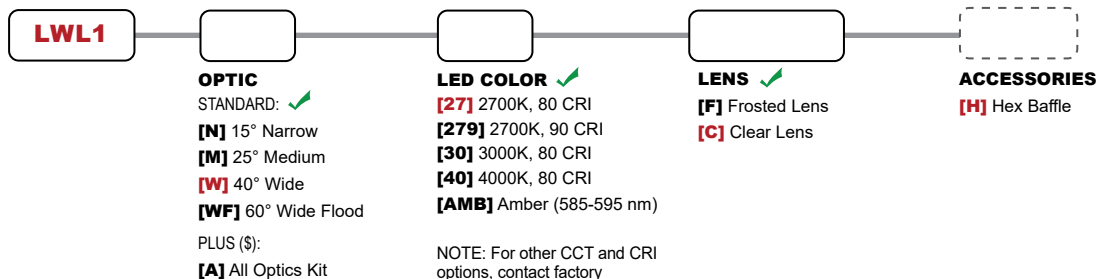
□ INDICATES REQUIRED FIELD

□ INDICATES OPTIONAL FIELD

✓ INCLUDED IN BASE PRICE

[ \_ ] QUICK SPEC (See Below)

**QUICK SPEC SKU** **LWL1-W-27-C-H-R-NAT**



### ACCESSORIES



H

### MOUNTS



[R] Rear Conduit



[S] Side Conduit



[MJB] Micro J-Box

# LWL1 TERRA COTTA

## PHOTOMETRIC OVERVIEW

Information based on 3000K. To download more in-depth IES photometric data, visit [auroralight.com/product/lwl1-terra-cotta/](https://auroralight.com/product/lwl1-terra-cotta/)

<b>3000K 15° (NARROW)</b> <b>123.3 LUMENS • CBCP 1188</b> <b>AURORALIGHT LWL1-N-30</b>		
30 FT	1.32	7.25
26 FT	1.76	6.28
22 FT	2.45	5.31
18 FT	3.67	4.35
14 FT	6.06	3.38
10 FT	11.9	2.42
6 FT	33.0	1.45
Distance From Fixture	Footcandles	Beam Width

<b>3000K 25° (MEDIUM)</b> <b>136.1 LUMENS • CBCP 730</b> <b>AURORALIGHT LWL1-M-30</b>		
30 FT	0.812	10.9
26 FT	1.08	9.44
22 FT	1.51	7.99
18 FT	2.25	6.53
14 FT	3.73	5.08
10 FT	7.30	3.63
6 FT	20.3	2.18
Distance From Fixture	Footcandles	Beam Width

<b>4000K 40° (WIDE)</b> <b>154.5 LUMENS • CBCP 336</b> <b>AURORALIGHT LWL1-W-40</b>		
30 FT	0.373	19.8
26 FT	0.497	17.2
22 FT	0.693	14.5
18 FT	1.04	11.9
14 FT	1.71	9.24
10 FT	3.36	6.60
6 FT	9.32	3.96
Distance From Fixture	Footcandles	Beam Width

<b>3000K 60° (WIDE FLOOD)</b> <b>131.9 LUMENS • CBCP 114</b> <b>AURORALIGHT LWL1-WF-30</b>		
30 FT	0.126	30.1
26 FT	0.167	26.1
22 FT	0.234	22.1
18 FT	0.349	18.1
14 FT	0.577	14.1
10 FT	1.13	10.0
6 FT	3.14	6.02
Distance From Fixture	Footcandles	Beam Width