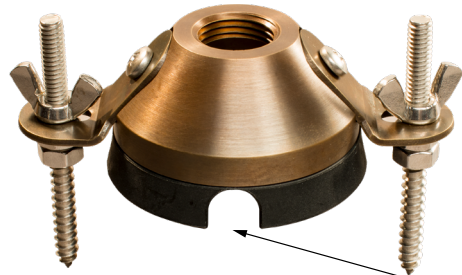


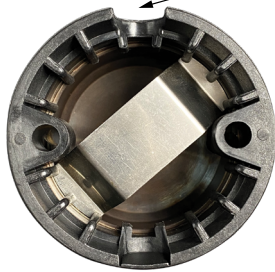
BTM BOLT-ON TREE MOUNT

The **BTM Bolt-On Tree Mount**, part of an arbor-focused offering from Auroralight, is a simple and robust solution for use when a solid mount is required or preferred over our passive Tree Strap. The BTM is machined from solid brass for durability and features a nylon base with multiple wire exit ports. The BTM has a STANDARD: 1/2" (NPS) Thread that is compatible with most fixture brands. When installed onto solid timber, it is robust enough to support our largest luminaires. For easy and safe installation, pre-wire the luminaires on the ground, and use the supplied stainless-steel retention clip to hold connectors inside each brass fitting.

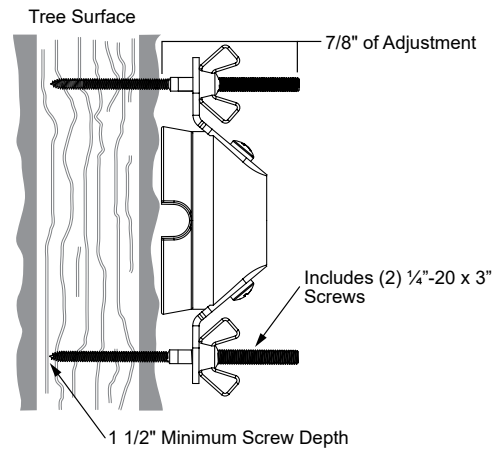
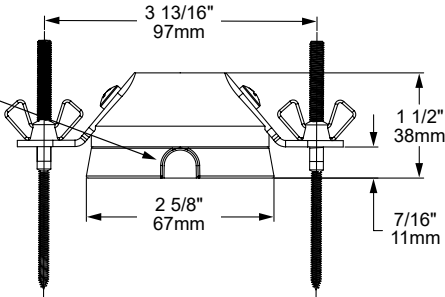


BTM-1/2-BLP

Wire knock-out



Includes stainless steel retention clip for simple wire management



ORDERING GUIDE: ^{Prefix} **BTM** B (BOLT-ON) T (TREE) M (MOUNT)

□ INDICATES REQUIRED FIELD □ INDICATES OPTIONAL FIELD ✓ INCLUDED IN BASE PRICE [_] QUICK SPEC (See Below)

QUICK SPEC SKU BTM-AMS-NAT

BTM

FIXTURE ATTACHMENT ✓
[1/2] 1/2" (NPS) Universal Threaded Hole
[AMS] Aurora Mount System

FINISH
 STANDARD:
[NAT] Natural ✓
 PLUS (\$):
[BLP] Bronze Living Patina
[BLP-XD] BLP Extra Dark
 PREMIUM (\$\$\$):
[NI] Nickel PVD
[BG] Black Gloss PVD
[BS] Black Satin PVD
[BZ] Bronze PVD
[BZ-XD] Dark Bronze PVD