

The newly re-designed **HRL16-LM Telluride** utilizes our newest "Designer Series" LED module featuring six interchangeable optics from Narrow to Ultra flood and wattages in 4, 6, 8, and 12 Watts. No tools are required to change modules or swap optics. The HRL16 is specifically designed to install quickly. This luminaire is ideal for downlighting, directional lighting, and wall-washing, providing dramatic results. The SM1 (included) is all that is needed to mount on walls, posts, beams, etc. The 1/2" adapter (included) allows to mount onto any 1/2" threaded mount.

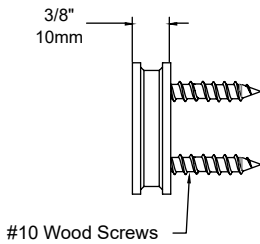
Features include:

- Interchangeable LED Module in 4, 6, 8 or 12 Watts up to 676 Lumens
- 6 Interchangeable PMMA Acrylic Optics from 20° to 75°
- 2700K (80 & 90 CRI), 3000K (80 CRI), or 4000K (80 CRI)
- Thermally Integrated® w/ Copper Core Technology®
- Storm Drain™ Lens Drainage System
- 12V Integral Constant Current Driver (Remote 12V AC/DC Transformer Required)
- Dimmable to <10% (TRIAC/Forward Phase) via compatible transformer
- Compatible w/ 12V AC/DC MLV or ELV Transformers
- 2 Mount Options Included w/ Stainless Steel Hardware (1/2" Threaded Adapter & Surface Mount)
- Solid Brass Construction

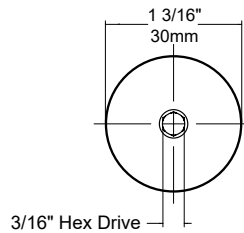
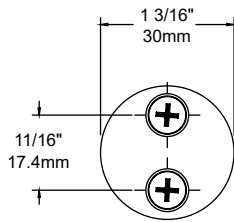


HRL16-LM-60-IWA-BLP
(Shown w/ Optional [IWA])

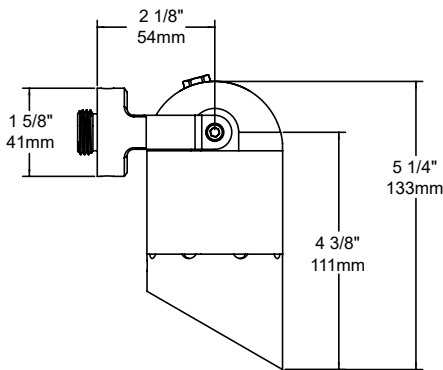
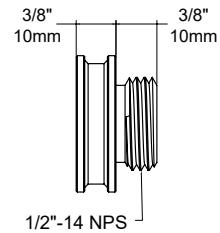
HRL16-LM-50-BLP-XD



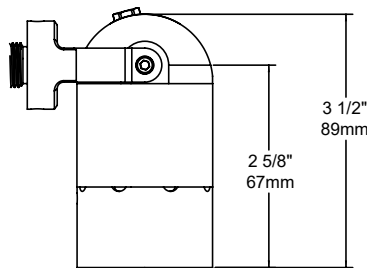
[SM1] Surface Mount
(Included)



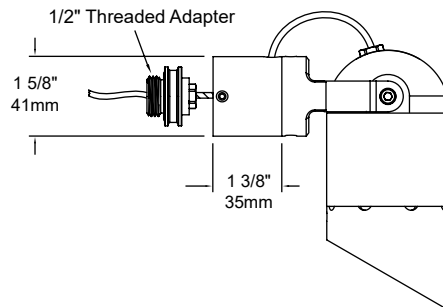
[1/2] 1/2" Threaded Adapter
(Included)



[60] 60° Angled Shield



[90] 90° Straight Shield



[IWA] Internal Wiring Adapter
(Optional)

SEE NEXT PAGE FOR ORDERING INFORMATION

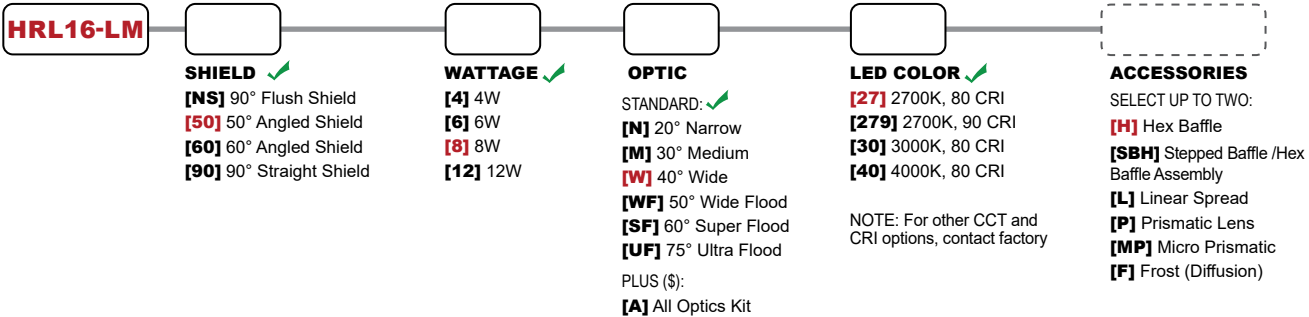
HRL16-LM TELLURIDE



ORDERING GUIDE: ^{Prefix} **HRL16-LM** H (HIGH PERFORMANCE) RL (RAFTER LIGHT) 16 (SERIES) L (LIGHT) M (MODULE)

☐ INDICATES REQUIRED FIELD ☐ INDICATES OPTIONAL FIELD ✓ INCLUDED IN BASE PRICE [_] QUICK SPEC (See Below)

QUICK SPEC SKU **HRL16-LM-50-8-W-27-H-NAT**



INCLUDED



MOUNT

COVER PLATE:
[CP35] 3x5" Brass Cover Plate
[CP4] 4" Brass Cover Plate
[CP45] 4 1/2" Brass Cover Plate
[MC45-1] 4 1/2" Mount Canopy (Single Hole/One Fixture)
[PC-60-1] 4 1/2" Power Canopy Incl. w/ 60W 120-12V Trans. (Single Hole/One Fixture)
 SURFACE MOUNT:
[SMJB-1-5] Surface Mount J-Box (Single Hole/One Fixture) w/ 5 KO
[SM2] 2 1/4" Surface Mount
[SM3] 3 1/4" Surface Mount
 TREE:
[STM] Screw-In Tree Mount
[BTM] Bolt-On Tree Mount
[TS-HD-1/2-36] 36" Tree Strap - Heavy Duty

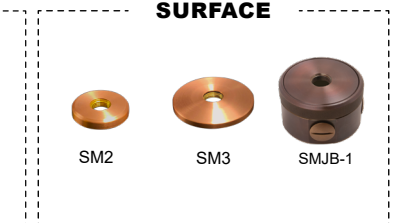
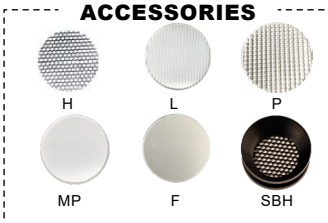
MOUNT ACCESSORY

[IWA] The IWA (Internal Wiring Adapter) internally feeds the HRL's external wire through any 1/2" mount.

 NOTE: Wire connection on all mounts will be external unless [IWA] is selected.

FINISH

STANDARD:
[NAT] Natural ✓
 PLUS (\$):
[BLP] Bronze Living Patina
[BLP-XD] BLP Extra Dark
 PREMIUM (\$\$\$):
[NI] Nickel PVD
[BG] Black Gloss PVD
[BS] Black Satin PVD
[BZ] Bronze PVD
[BZ-XD] Dark Bronze PVD



HRL16-LM TELLURIDE

PHOTOMETRIC OVERVIEW

To download more in-depth IES photometric data, visit auroralight.com/product/hr16-lm-telluride/

12W 3000K 20° (NARROW) 90° Flush Shield 549.7 LUMENS • CBCP 2010 • BUG B1 U0 G0 AURORALIGHT HRL16-LM-12-N-30		
30 FT	2.23	10.2
26 FT	2.97	8.87
22 FT	4.15	7.51
18 FT	6.20	6.14
14 FT	10.3	4.78
10 FT	20.1	3.41
6 FT	55.8	2.05
Distance From Fixture	Footcandles	Beam Width

12W 3000K 30° (MEDIUM) 90° Flush Shield 610.9 LUMENS • CBCP 2136 • BUG B1 U0 G0 AURORALIGHT HRL16-LM-12-M-30		
30 FT	2.37	13.6
26 FT	3.16	11.8
22 FT	4.41	9.94
18 FT	6.59	8.14
14 FT	10.9	6.33
10 FT	21.4	4.52
6 FT	59.3	2.71
Distance From Fixture	Footcandles	Beam Width

12W 3000K 40° (WIDE) 90° Flush Shield 676.8 LUMENS • CBCP 1375 • BUG B1 U0 G0 AURORALIGHT HRL16-LM-12-W-30		
30 FT	1.53	19.7
26 FT	2.03	17.1
22 FT	2.84	14.5
18 FT	4.24	11.8
14 FT	7.01	9.21
10 FT	13.7	6.58
6 FT	38.2	3.95
Distance From Fixture	Footcandles	Beam Width

12W 3000K 50° (WIDE FLOOD) 90° Flush Shield 668.9 LUMENS • CBCP 985 • BUG B1 U0 G0 AURORALIGHT HRL16-LM-12-WF-30		
30 FT	1.09	23.8
26 FT	1.46	20.6
22 FT	2.04	17.5
18 FT	3.04	14.3
14 FT	5.03	11.1
10 FT	9.85	7.94
6 FT	27.4	4.76
Distance From Fixture	Footcandles	Beam Width

12W 3000K 60° (SUPER FLOOD) No Shield 628 LUMENS • CBCP 621 • BUG B1 U0 G0 AURORALIGHT HRL16-LM-12-SF-30		
30 FT	0.687	30.4
26 FT	0.914	26.3
22 FT	1.28	22.3
18 FT	1.91	18.2
14 FT	3.15	14.2
10 FT	6.18	10.1
6 FT	17.2	6.08
Distance From Fixture	Footcandles	Beam Width

12W 3000K 75° (ULTRA FLOOD) No Shield 506.6 LUMENS • CBCP 416 • BUG B1 U0 G0 AURORALIGHT HRL16-LM-12-UF-30		
30 FT	0.462	34.5
26 FT	0.615	29.9
22 FT	0.859	25.3
18 FT	1.28	20.7
14 FT	2.12	16.1
10 FT	4.16	11.5
6 FT	11.5	6.90
Distance From Fixture	Footcandles	Beam Width