



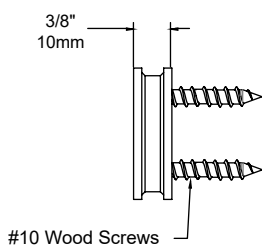
HRL16-XO-60-IWA-BLP
(Shown w/ Optional [IWA])

HRL16-XO-50-BLP-XD

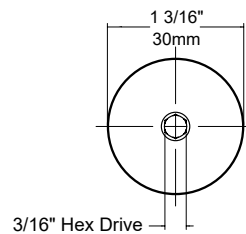
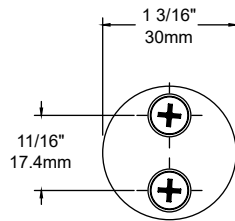
The newly redesigned **HRL16-XO Telluride** includes our Storm Drain™ lens drainage allowing water and dirt to wash away for optimal light transmission. intended for use with open source MR16 sized LED lamps. The HRL16-XO is field convertible to our high performance LM16 "Designer Module" should the need arise. Offered in 2 versions: (LM, & XO) to meet the specific demands of our top tier customers. The HRL16 is specifically designed to install quickly. This luminaire is ideal for downlighting, directional lighting, and wall-washing, providing dramatic results. The SM1 (included) is all that is needed to mount on walls, posts, beams, etc. The 1/2" adapter (included) allows to mount onto any 1/2" threaded mount.

Features include:

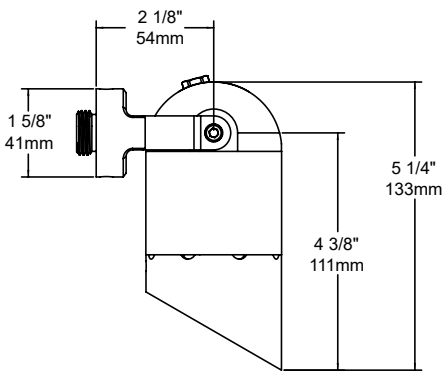
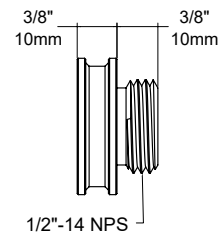
- Variety of MR16 Lamp Options
- 2700K (90 CRI), or 3000K (90 CRI)
- Storm Drain™ Lens Drainage System
- Compatible with 4, 6, 8 or 12W "Designer LED module"
- 2 Mount Options Included w/ Stainless Steel Hardware (1/2" Threaded Adapter & Surface Mount)
- Solid Brass Construction



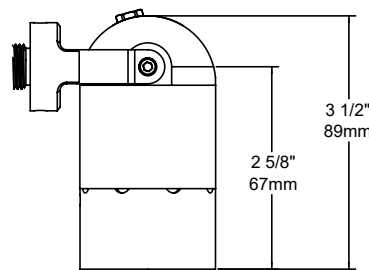
[SM1] Surface Mount
(Included)



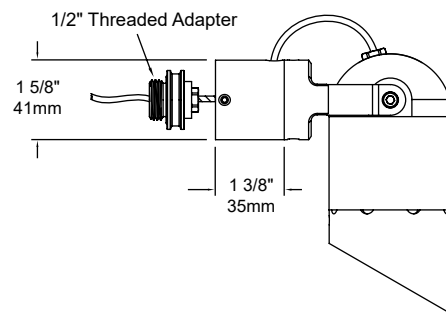
[1/2] 1/2" Threaded Adapter
(Included)



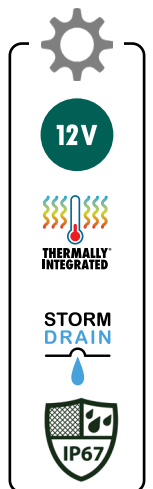
[60] 60° Angled Shield



[90] 90° Straight Shield



[IWA] Internal Wiring Adapter
(Optional)



SEE NEXT PAGE FOR ORDERING INFORMATION

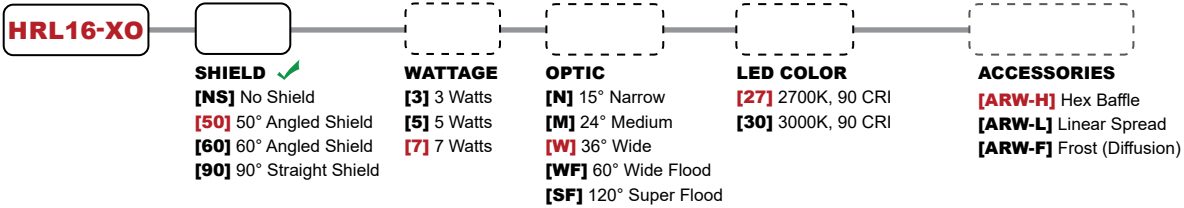
HRL16-XO TELLURIDE



ORDERING GUIDE: ^{Prefix} **HRL16-XO** H (HIGH PERFORMANCE) RL (RAFTER LIGHT) 16 (SERIES) XO (NO LAMP)

☐ INDICATES REQUIRED FIELD ☐ INDICATES OPTIONAL FIELD ✓ INCLUDED IN BASE PRICE [_] QUICK SPEC (See Below)

QUICK SPEC SKU **HRL16-XO-50-7-W-27-ARW-H-NAT**



INCLUDED



MOUNT
 COVER PLATE:
[CP35] 3x5" Brass Cover Plate
[CP4] 4" Brass Cover Plate
[CP45] 4 1/2" Brass Cover Plate
[MC45-1] 4 1/2" Mount Canopy (Single Hole/One Fixture)
[PC-60-1] 4 1/2" Power Canopy Incl. w/ 60W 120-12V Trans. (Single Hole/One Fixture)
 SURFACE MOUNT:
[SMJB-1-5] Surface Mount J-Box (Single Hole/One Fixture) w/ 5 KO
[SM2] 2 1/4" Surface Mount
[SM3] 3 1/4" Surface Mount
 TREE:
[STM] Screw-In Tree Mount
[BTM] Bolt-On Tree Mount
[TS-HD-1/2-36] 36" Tree Strap - Heavy Duty

MOUNT ACCESSORY
[IWA] The IWA (Internal Wiring Adapter) internally feeds the HRL's external wire through any 1/2" mount.

NOTE: Wire connection on all mounts will be external unless [IWA] is selected.

FINISH
 STANDARD:
[NAT] Natural ✓
 PLUS (\$):
[BLP] Bronze Living Patina
[BLP-XD] BLP Extra Dark
 PREMIUM (\$\$\$):
[NI] Nickel PVD
[BG] Black Gloss PVD
[BS] Black Satin PVD
[BZ] Bronze PVD
[BZ-XD] Dark Bronze PVD

