



## HSL11-LM TAOS

The compact **HSL11-LM Taos** is engineered around Auroralight's interchangeable LED module to deliver brilliant LED performance in a small package. Storm Drain™ lensing prevents water and dirt from collecting on the lens for maximum illumination. Our exclusive AMS™ system offers an extensive choice of mounting options making this elegant accent-light ideal for any lighting task; landscape or architecture, inside or out, the HSL11 is up to the task.

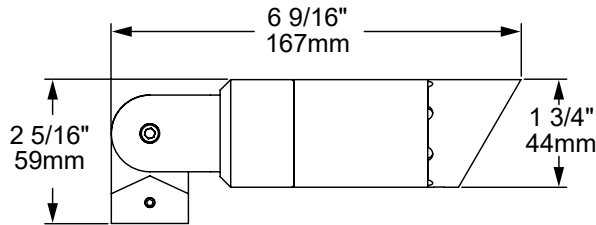
**Features include:**

- Interchangeable LED Module in 2, 4 or 6 Watts up to 412 Lumens
- Cree LED™ XLAMP® High Density (XHP)
- Interchangeable UV & Shock Resistant Silicone Optic from 15° to 60°
- 2700K (80 & 90 CRI), 3000K (80 CRI), or 4500K (80 CRI)
- Thermally Integrated® w/ Copper Core Technology®
- Storm Drain™ Lens Drainage System
- Aurora Mount System (AMS™) Compatible
- 12V Integral Constant Current Driver (Remote 12V AC/DC Transformer Required)
- Dimmable to <10% (TRIAC/Forward Phase) via Compatible Transformer
- Compatible w/ 12V AC/DC MLV or ELV Transformers
- Solid Brass Construction
- Patented Optic US 10,655,799 B2

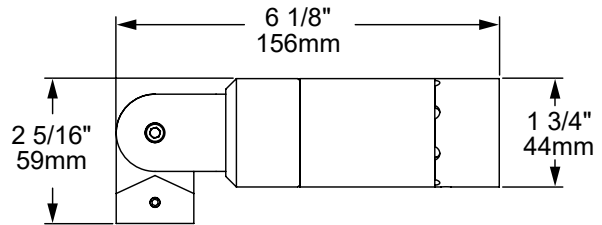


HSL11-LM-60-G-NI

HSL11-LM-60-NG-NAT



[60] 60° Angled Shield



[90] 90° Straight Shield

The FIT™ IP67 module is built on Auroralight's Copper Core Technology® platform and includes FIT™ Acrylic Optics.

**COPPER CORE TECHNOLOGY®**

The Aurora Mount System (AMS™) features 2 axis of adjustment – 360° of fixture rotation at the mount and 230° at the solid brass knuckle. The ultimate in precision aiming without twisting or compromising wire integrity.

**SEE NEXT PAGE FOR ORDERING INFORMATION**



Prefix

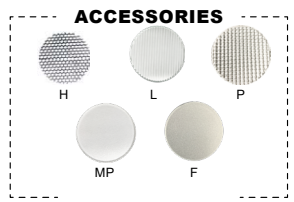
**ORDERING GUIDE:** **HSL11-LM** H (HIGH PERFORMANCE) SL (SPOTLIGHT) 11 (SERIES) L (LIGHT) M (MODULE)

□ INDICATES REQUIRED FIELD   □ INDICATES OPTIONAL FIELD   ✓ INCLUDED IN BASE PRICE   [ \_ ] QUICK SPEC (See Below)

**QUICK SPEC SKU**   **HSL11-LM-60-NG-6-W-27-H-AGS-NAT**

<b>HSL11-LM</b>	<b>SHIELD</b> ✓ [60] 60° Angled [90] 90° Straight [NS] No Shield	<b>BODY</b> ✓ [G] Grooves [NG] No Grooves	<b>WATTAGE</b> ✓ [2] 2 Watts [4] 4 Watts [6] 6 Watts	<b>OPTIC</b> STANDARD: ✓ [N] 15° Narrow [M] 25° Medium [W] 40° Wide [WF] 60° Wide Flood PLUS (\$): [A] All Optics Kit	<b>LED COLOR</b> ✓ [27] 2700K, 80 CRI [279] 2700K, 90 CRI [30] 3000K, 80 CRI [45] 4500K, 80 CRI  NOTE: For other CCT and CRI options, contact factory	<b>ACCESSORIES</b> SELECT UP TO TWO: [H] Hex Baffle [L] Linear Spread [P] Prismatic Lens [MP] Micro Prismatic [F] Frost (Diffusion)
-----------------	---	---	---	--	---	---

<b>RISER</b> EXTENDABLE (EXTR): [5X10] 5x10" [7X14] 7x14" [9X18] 9x18" [11X22] 11x22" [18X36] 18x36" SUBTERRANEAN (EXTENDABLE): (Mounts are not applicable with STR) [STR-12] 12" above grade 13 1/2" below [STR-18] 18" above grade 19 1/2" below FIXED: [FR-4] 4" [FR-8] 8" [FR-12] 12" [FR-16] 16" [FR-18] 18" 90° & TEE OPTIONS: Add <b>-90</b> (for 90°) or <b>-T</b> (for Tee) to any of the riser part numbers above.  NOTE: Risers are not compatible with AMS Mounts.	<b>MOUNT</b> NO MOUNT: [1/2] 1/2" (NPS) Universal Thread ✓ GROUND: [AGS] AMS Ground Stake [2GS] Ground Stake w/ 2" Cap [3GS] Ground Stake w/ 3" Cap [325GS] Ground Stake w/ 3 1/4" Cap [DS] 9" Deluxe Spike [TR-12] 12" Trident Spike [JB3-S] 3" Junction Box w/ PVC Stake [PB-S] Power Box w/ PVC Stake Incl. w/ 60W 120-12V Trans. [PM-60-1] Concrete Pedestal Mount w/ 60W 120-12V Trans. (Single Hole/One Fixture) [PM-60-2] Concrete Pedestal Mount w/ 60W 120-12V Trans. (Double Hole/Two Fixtures)  TREE: [TS-HD-36] 36" AMS Tree Strap - Heavy Duty [BTM] Bolt-On Tree Mount [STM] Screw-In Tree Mount	<b>SURFACE:</b> [SMJB-1] Surface Mount J-Box (Single Hole/One Fixture) w/ 5 KO [SMJB-2] Surface Mount J-Box (Double Hole/Two Fixtures) w/ 5 KO [SM2] 2" Surface Mount [SM3] 3" Surface Mount [TM] AMS Trellis Mount [SB] AMS Splice Box  COVER PLATE: [CP35-BR] 3 1/2" Brass Cover Plate [CP14] 4" AMS J-Box Cover Plate [CP4-BR] 4" Brass Cover Plate [CP45-BR] 4 1/2" Brass Cover Plate [MC45-1] 4 1/2" Mount Canopy (Single Hole/One Fixture) [MC45-2] 4 1/2" Mount Canopy (Double Hole/Two Fixtures) [PC-60-1] 4 1/2" Power Canopy Incl. w/ 60W 120-12V Trans. (Single Hole/One Fixture) [PC-60-2] 4 1/2" Power Canopy Incl. w/ 60W 120-12V Trans. (Double Hole/Two Fixtures)  NOTE: Universal adapter included w/ fixture, except where AMS is noted. Most common configurations listed above; See Mount/Riser spec sheets for all options.	<b>FINISH</b> STANDARD: [NAT] Natural ✓ PLUS (\$): [BLP] Bronze Living Patina [BLP-XD] BLP Extra Dark  PREMIUM (\$\$\$): [NI] Nickel PVD [BG] Black Gloss PVD [BS] Black Satin PVD [BZ] Bronze PVD [BZ-XD] Dark Bronze PVD
--	--	--	--



<b>MOST POPULAR MOUNT OPTIONS</b> EXTR with 2GS, AGS, DS, TS-HD	<b>GROUND</b> AGS, 2GS, DS, TR, JB3 PB, PM-60	<b>COVER PLATE</b> CP14, CP35, CP4, CP45, PC-60 MC45
<b>EXTENDABLE</b> Tee, 90°, EXTR	<b>SUBTERRANEAN (EXTENDABLE)</b> STR, Tee, 90°	<b>FIXED</b> Tee, 90°, FR
<b>SURFACE</b> SMJB-1, SMJB-2, SM2, SM3, TM, SB	<b>TREE</b> TS-HD, BTM, STM	




# HSL11-LM TAOS

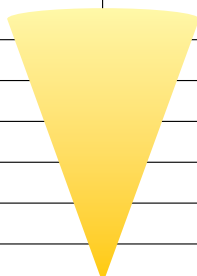
## PHOTOMETRIC OVERVIEW

To download more in-depth IES photometric data, visit [auroralight.com/product/hsl11-lm-taos/](http://auroralight.com/product/hsl11-lm-taos/)

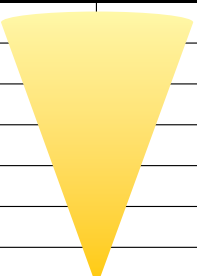
<b>6 Watts 3000K 15° (NARROW) No Shield</b> <b>410.9 LUMENS • CBCP 2160</b> AURORALIGHT HSL11-LM-6-N-30		
30 FT	2.40	10.3
26 FT	3.20	8.89
22 FT	4.46	7.53
18 FT	6.67	6.16
14 FT	11.0	4.79
10 FT	21.6	3.42
6 FT	60.0	2.05
Distance From Fixture	Footcandles	Beam Width



<b>6 Watts 3000K 25° (MEDIUM) No Shield</b> <b>412.4 LUMENS • CBCP 1439 • BUG B1 U0 GO</b> AURORALIGHT HSL11-LM-6-M-30		
30 FT	1.60	13.2
26 FT	2.13	11.4
22 FT	2.97	9.69
18 FT	4.44	7.92
14 FT	7.34	6.16
10 FT	14.4	4.40
6 FT	40.0	2.64
Distance From Fixture	Footcandles	Beam Width



<b>6 Watts 3000K 40° (WIDE) No Shield</b> <b>399.9 LUMENS • CBCP 1120 • BUG B1 U0 GO</b> AURORALIGHT HSL11-LM-6-W-30		
30 FT	1.21	15.9
26 FT	1.62	13.8
22 FT	2.26	11.7
18 FT	3.37	9.55
14 FT	5.57	7.43
10 FT	10.9	5.31
6 FT	30.3	3.18
Distance From Fixture	Footcandles	Beam Width



<b>6 Watts 3000K 60° (WIDE FLOOD) No Shield</b> <b>286.2 LUMENS • CBCP 449 • BUG B1 U0 GO</b> AURORALIGHT HSL11-LM-6-WF-30		
30 FT	0.479	21.8
26 FT	0.637	18.9
22 FT	0.890	16.0
18 FT	1.33	13.1
14 FT	2.20	10.2
10 FT	4.31	7.25
6 FT	12.0	4.35
Distance From Fixture	Footcandles	Beam Width

