

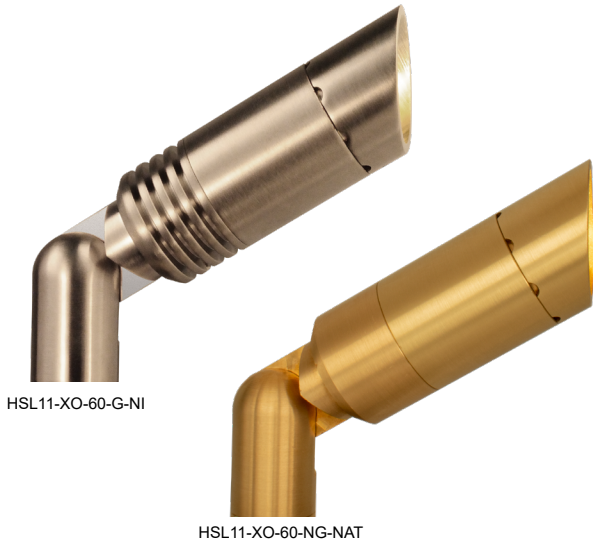


HSL11-XO TAOS

The compact **HSL11-XO Taos** delivers brilliant performance in a small package. Storm Drain™ lensing prevents water and dirt from collecting on the lens for maximum illumination. Intended for use with open source MR11 sized LED lamps. The HSL11-XO is field convertible to our high performance LM11 "Designer Module" should the need arise. Our exclusive AMS™ system offers an extensive choice of mounting options making this elegant accent-light ideal for any lighting task; landscape or architecture, inside or out, the HSL11 is up to the task.

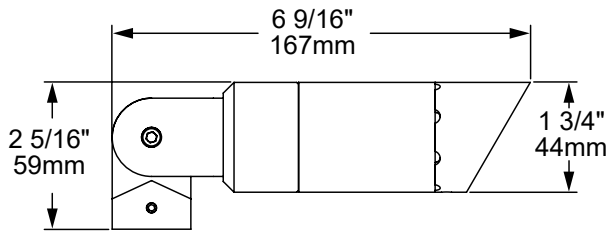
Features include:

- Variety of MR11 Lamp Options
- Storm Drain™ Lens Drainage System
- Aurora Mount System (AMS™) Compatible
- 2700K & 3000K (90 CRI)
- 3 Glare Shield Options
- Solid Brass Construction
- Compatible with 2, 4 or 6 Watts "Designer LED Module"

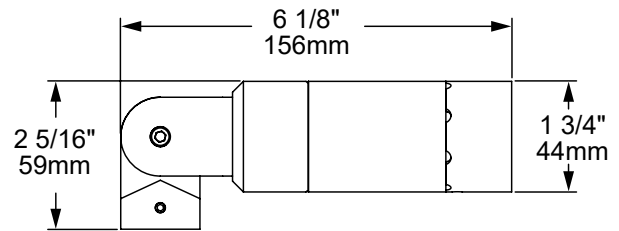


HSL11-XO-60-G-NI

HSL11-XO-60-NG-NAT



[60] 60° Angled Shield



[90] 90° Straight Shield

The Aurora Mount System (AMS™) features 2 axis of adjustment – 360° of fixture rotation at the mount and 230° at the solid brass knuckle. The ultimate in precision aiming without twisting or compromising wire integrity.

12V

STORM DRAIN

IP67

SEE NEXT PAGE FOR ORDERING INFORMATION

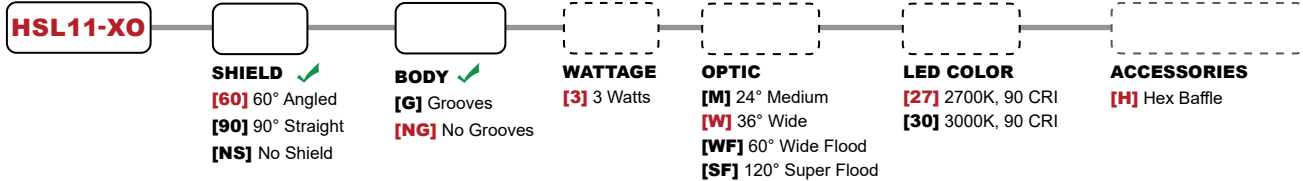


Prefix

ORDERING GUIDE: **HSL11-XO** H (HIGH PERFORMANCE) SL (SPOTLIGHT) 11 (SERIES) XO (NO LAMP)

☐ INDICATES REQUIRED FIELD ☐ INDICATES OPTIONAL FIELD ✓ INCLUDED IN BASE PRICE [_] QUICK SPEC (See Below)

QUICK SPEC SKU **HSL11-XO-60-NG-3-W-27-H-AGS-NAT**



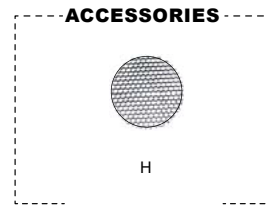
RISER
 EXTENDABLE (EXTR):
[5X10] 5x10"
[7X14] 7x14"
[9X18] 9x18"
[11X22] 11x22"
[18X36] 18x36"
 SUBTERRANEAN (EXTENDABLE):
 (Mounts are not applicable with STR)
[STR-12] 12" above grade 13 1/2" below
[STR-18] 18" above grade 19 1/2" below
 FIXED:
[FR-4] 4"
[FR-8] 8"
[FR-12] 12"
[FR-16] 16"
[FR-18] 18"
 90° & TEE OPTIONS:
 Add **-90** (for 90°) or **-T** (for Tee) to any of the riser part numbers above.
 NOTE: Risers are not compatible with AMS Mounts.

MOUNT
 NO MOUNT:
[1/2] 1/2" (NPS) Universal Thread ✓
 GROUND:
[AGS] AMS Ground Stake
[2GS] Ground Stake w/ 2" Cap
[3GS] Ground Stake w/ 3" Cap
[325GS] Ground Stake w/ 3 1/4" Cap
[DS] 9" Deluxe Spike
[TR-12] 12" Trident Spike
[JB3-S] 3" Junction Box w/ PVC Stake
[PB-S] Power Box w/ PVC Stake Incl. w/ 60W 120-12V Trans.
[PM-60-1] Concrete Pedestal Mount w/ 60W 120-12V Trans.
 (Single Hole/One Fixture)
[PM-60-2] Concrete Pedestal Mount w/ 60W 120-12V Trans.
 (Double Hole/Two Fixtures)
 TREE:
[TS-HD-36] 36" AMS Tree Strap - Heavy Duty
[BTM] Bolt-On Tree Mount
[STM] Screw-In Tree Mount

SURFACE:
[SMJB-1] Surface Mount J-Box (Single Hole/One Fixture) w/ 5 KO
[SMJB-2] Surface Mount J-Box (Double Hole/Two Fixtures) w/ 5 KO
[SM2] 2" Surface Mount
[SM3] 3" Surface Mount
[TM] AMS Trellis Mount
[SB] AMS Splice Box
COVER PLATE:
[CP35-BR] 3 1/2" Brass Cover Plate
[CP14] 4" AMS J-Box Cover Plate
[CP4-BR] 4" Brass Cover Plate
[CP45-BR] 4 1/2" Brass Cover Plate
[MC45-1] 4 1/2" Mount Canopy (Single Hole/One Fixture)
[MC45-2] 4 1/2" Mount Canopy (Double Hole/Two Fixtures)
[PC-60-1] 4 1/2" Power Canopy Incl. w/ 60W 120-12V Trans. (Single Hole/One Fixture)
[PC-60-2] 4 1/2" Power Canopy Incl. w/ 60W 120-12V Trans. (Double Hole/Two Fixtures)

FINISH
 STANDARD:
[NAT] Natural ✓
 PLUS (\$):
[BLP] Bronze Living Patina
[BLP-XD] BLP Extra Dark
 PREMIUM (\$\$\$):
[NI] Nickel PVD
[BG] Black Gloss PVD
[BS] Black Satin PVD
[BZ] Bronze PVD
[BZ-XD] Dark Bronze PVD

NOTE: Universal adapter included w/ fixture, except where AMS is noted. Most common configurations listed above; See Mount/Riser spec sheets for all options.



MOST POPULAR MOUNT OPTIONS

GROUND

COVER PLATE

EXTENDABLE

SUBTERRANEAN (EXTENDABLE)

FIXED

SURFACE

TREE