



HSL16-LM-S-60-NG-BLP-XD

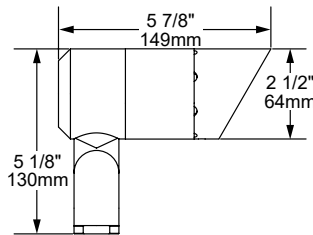


HSL16-LM-R-60-G-NAT

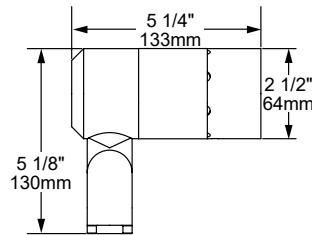
The **HSL16-LM Telluride**, the flagship directional from Auroralight, utilizes our Thermally Integrated™ Interchangeable LED Module coupled to an all brass body. This union provides superior heat dissipation critical for long life and high performance. The HSL16 includes our Storm Drain™ lens drainage allowing water and dirt to wash away for optimal light transmission. The Telluride features the Aurora Mount System (AMS™), which provides 360° of fixture rotation on over 8 unique mounting devices for precise aiming without compromising wire integrity. Offered in 2 versions: (LM, & XO) to meet the specific demands of our top tier customers.

**Features include:**

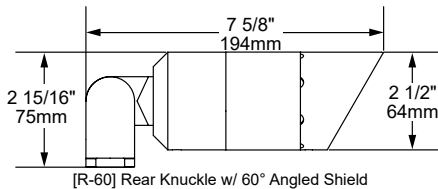
- Interchangeable LED Module in 4, 6, 8 or 12 Watts up to 676 Lumens
- 6 Interchangeable PMMA Acrylic Optics from 20° to 75°
- 2700K (80 & 90 CRI), 3000K (80 CRI), or 4000K (80 CRI)
- Thermally Integrated® w/ Copper Core Technology®
- Storm Drain™ Lens Drainage System
- Aurora Mount System (AMS™) Compatible
- 12V Integral Constant Current Driver (Remote 12V AC/DC Transformer Required)
- Dimmable to <10% (TRIAC/Forward Phase) via Compatible Transformer
- Compatible w/ 12V AC/DC MLV or ELV Transformers
- Solid Brass Construction



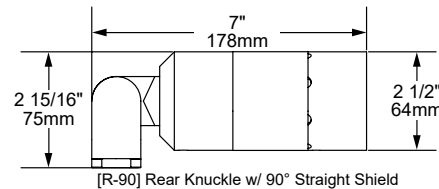
[S-60] Side Knuckle w/ 60° Angled Shield



[S-90] Side Knuckle w/ 90° Straight Shield



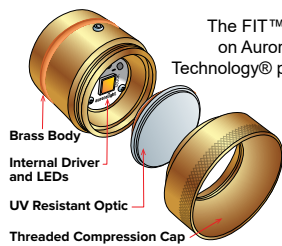
[R-60] Rear Knuckle w/ 60° Angled Shield



[R-90] Rear Knuckle w/ 90° Straight Shield

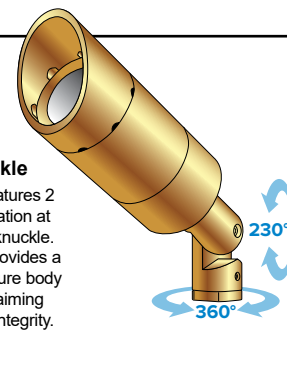
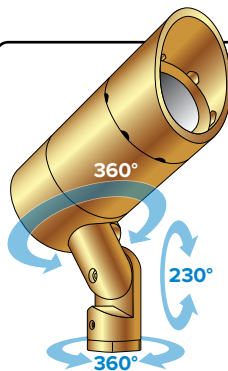


The FIT™ IP67 module is built on Auroralight's Copper Core Technology® platform and includes FIT™ Acrylic Optics.



**Side Knuckle vs Rear Knuckle**

The Aurora Mount System (AMS™) features 2 axis of adjustment – 360° of fixture rotation at the mount and 230° at the solid brass knuckle. When paired with a side knuckle, this provides a 3rd axis of adjustment, up to 360° of fixture body rotation, for the ultimate in precision aiming without twisting or compromising wire integrity.

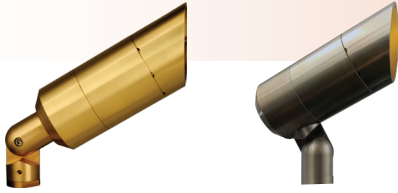


12V



**SEE NEXT PAGE FOR ORDERING INFORMATION**

## HSL16-LM TELLURIDE



**ORDERING GUIDE:** **HSL16-LM** H (HIGH PERFORMANCE) SL (SPOTLIGHT) 16 (SERIES) L (LIGHT) M (MODULE)

☐ INDICATES REQUIRED FIELD    ☐ INDICATES OPTIONAL FIELD    ✓ INCLUDED IN BASE PRICE    [ \_ ] QUICK SPEC (See Below)

**QUICK SPEC SKU HSL16-LM-S-50-NG-8-W-27-H-AGS-NAT**

<b>HSL16-LM</b>	<b>KNUCKLE</b> ✓ [R] Rear [S] Side	<b>SHIELD</b> ✓ [NS] No Shield [50] 50° Angled [60] 60° Angled [90] 90° Straight	<b>BODY</b> ✓ [G] Grooves [NG] No Grooves	<b>WATTAGE</b> ✓ [4] 4 Watts [6] 6 Watts [8] 8 Watts [12] 12 Watts	<b>OPTIC</b> STANDARD: ✓ [N] 20° Narrow [M] 30° Medium [W] 40° Wide [WF] 50° Wide Flood [SF] 60° Super Flood [UF] 75° Ultra Flood PLUS (\$): [A] All Optics Kit	<b>LED COLOR</b> ✓ [27] 2700K, 80 CRI [279] 2700K, 90 CRI [30] 3000K, 80 CRI [40] 4000K, 80 CRI NOTE: For other CCT and CRI options, contact factory	<b>ACCESSORIES</b> SELECT UP TO TWO: [H] Hex Baffle [SBH] Stepped Baffle / Hex Baffle Assembly [L] Linear Spread [P] Prismatic Lens [MP] Micro Prismatic [F] Frost (Diffusion)
-----------------	--	--	---	--	--	---	---

**RISER**

EXTENDABLE (EXTR):  
**[5X10]** 5x10"  
**[7X14]** 7x14"  
**[9X18]** 9x18"  
**[11X22]** 11x22"  
**[18X36]** 18x36"

SUBTERRANEAN (EXTENDABLE):  
 (Mounts are not applicable with STR)  
**[STR-12]** 12" above grade 13 1/2" below  
**[STR-18]** 18" above grade 19 1/2" below

FIXED:  
**[FR-4]** 4"  
**[FR-8]** 8"  
**[FR-12]** 12"  
**[FR-16]** 16"  
**[FR-18]** 18"

90° & TEE OPTIONS:  
 Add **-90** (for 90°) or **-T** (for Tee) to any of the riser part numbers above.

NOTE: Risers are not compatible with AMS Mounts.

**MOUNT**

NO MOUNT:  
**[1/2]** 1/2" (NPS) Universal Thread ✓

GROUND:  
**[AGS]** AMS Ground Stake  
**[2GS]** Ground Stake w/ 2" Cap  
**[3GS]** Ground Stake w/ 3" Cap  
**[325GS]** Ground Stake w/ 3 1/4" Cap  
**[DS]** 9" Deluxe Spike  
**[TR-12]** 12" Trident Spike  
**[JB3-S]** 3" Junction Box w/ PVC Stake  
**[PB-S]** Power Box w/ PVC Stake Incl. w/ 60W 120-12V Trans.

**[PM-60-1]** Concrete Pedestal Mount w/ 60W 120-12V Trans.  
 (Single Hole/One Fixture)  
**[PM-60-2]** Concrete Pedestal Mount w/ 60W 120-12V Trans.  
 (Double Hole/Two Fixtures)

TREE:  
**[TS-HD-36]** 36" AMS Tree Strap - Heavy Duty  
**[BTM]** Bolt-On Tree Mount  
**[STM]** Screw-In Tree Mount

**SURFACE:**  
**[SMJB-1]** Surface Mount J-Box (Single Hole/One Fixture) w/ 5 KO  
**[SMJB-2]** Surface Mount J-Box (Double Hole/Two Fixtures) w/ 5 KO  
**[SM2]** 2" Surface Mount  
**[SM3]** 3" Surface Mount  
**[TM]** AMS Trellis Mount  
**[SB]** AMS Splice Box

COVER PLATE:  
**[CP35-BR]** 3 1/2" Brass Cover Plate  
**[CP14]** 4" AMS J-Box Cover Plate  
**[CP4-BR]** 4" Brass Cover Plate  
**[CP45-BR]** 4 1/2" Brass Cover Plate  
**[MC45-1]** 4 1/2" Mount Canopy (Single Hole/One Fixture)  
**[MC45-2]** 4 1/2" Mount Canopy (Double Hole/Two Fixtures)  
**[PC-60-1]** 4 1/2" Power Canopy Incl. w/ 60W 120-12V Trans. (Single Hole/One Fixture)  
**[PC-60-2]** 4 1/2" Power Canopy Incl. w/ 60W 120-12V Trans. (Double Hole/Two Fixtures)

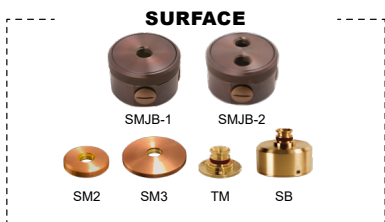
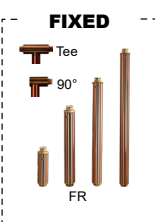
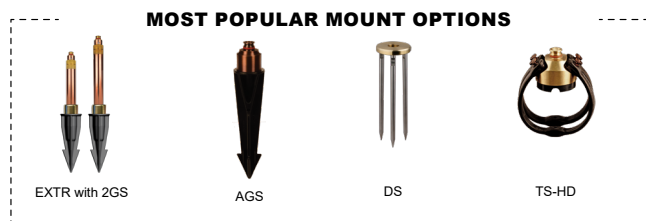
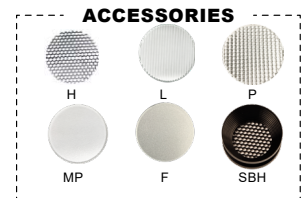
NOTE: Universal adapter included w/ fixture, except where AMS is noted. Most common configurations listed above; See Mount/Riser spec sheets for all options.

**FINISH**

STANDARD:  
**[NAT]** Natural ✓

PLUS (\$):  
**[BLP]** Bronze Living Patina  
**[BLP-XD]** BLP Extra Dark

PREMIUM (\$\$\$):  
**[NI]** Nickel PVD  
**[BG]** Black Gloss PVD  
**[BS]** Black Satin PVD  
**[BZ]** Bronze PVD  
**[BZ-XD]** Dark Bronze PVD

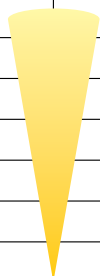


# HSL16-LM TELLURIDE


## PHOTOMETRIC OVERVIEW

Information based on 12 Watts 3000K. To download more in-depth IES photometric data, visit [auroralight.com/product/hsl16-lm-telluride/](http://auroralight.com/product/hsl16-lm-telluride/)

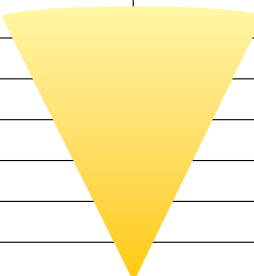
12 Watts 3000K 20° (NARROW) No Shield 549.7 LUMENS • CBCP 2010 • BUG B1 U0 G0 AURORALIGHT HSL16-LM-12-N-30		
30 FT	2.23	10.2
26 FT	2.97	8.87
22 FT	4.15	7.51
18 FT	6.20	6.14
14 FT	10.3	4.78
10 FT	20.1	3.41
6 FT	55.8	2.05
Distance From Fixture	Footcandles	Beam Width



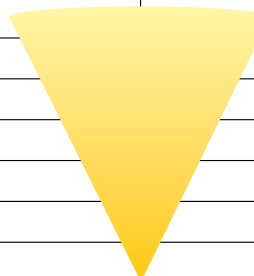
12 Watts 3000K 30° (MEDIUM) No Shield 610.9 LUMENS • CBCP 2136 • BUG B1 U0 G0 AURORALIGHT HSL16-LM-12-M-30		
30 FT	2.37	13.6
26 FT	3.16	11.8
22 FT	4.41	9.94
18 FT	6.59	8.14
14 FT	10.9	6.33
10 FT	21.4	4.52
6 FT	59.3	2.71
Distance From Fixture	Footcandles	Beam Width



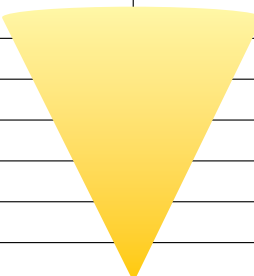
12 Watts 3000K 40° (WIDE) No Shield 676.8 LUMENS • CBCP 1375 • BUG B1 U0 G0 AURORALIGHT HSL16-LM-12-W-30		
30 FT	1.53	19.7
26 FT	2.03	17.1
22 FT	2.84	14.5
18 FT	4.24	11.8
14 FT	7.01	9.21
10 FT	13.7	6.58
6 FT	38.2	3.95
Distance From Fixture	Footcandles	Beam Width



12 Watts 3000K 50° (WIDE FLOOD) No Shield 668.9 LUMENS • CBCP 985 • BUG B1 U0 G0 AURORALIGHT HSL16-LM-12-WF-30		
30 FT	1.09	23.8
26 FT	1.46	20.6
22 FT	2.04	17.5
18 FT	3.04	14.3
14 FT	5.03	11.1
10 FT	9.85	7.94
6 FT	27.4	4.76
Distance From Fixture	Footcandles	Beam Width



12 Watts 3000K 60° (SUPER FLOOD) No Shield 628 LUMENS • CBCP 621 • BUG B1 U0 G0 AURORALIGHT HSL16-LM-12-SF-30		
30 FT	0.687	30.4
26 FT	0.914	26.3
22 FT	1.28	22.3
18 FT	1.91	18.2
14 FT	3.15	14.2
10 FT	6.18	10.1
6 FT	17.2	6.08
Distance From Fixture	Footcandles	Beam Width



12 Watts 3000K 75° (ULTRA FLOOD) No Shield 506.6 LUMENS • CBCP 416 • BUG B1 U0 G0 AURORALIGHT HSL16-LM-12-UF-30		
30 FT	0.462	34.5
26 FT	0.615	29.9
22 FT	0.859	25.3
18 FT	1.28	20.7
14 FT	2.12	16.1
10 FT	4.16	11.5
6 FT	11.5	6.90
Distance From Fixture	Footcandles	Beam Width

