

HSL16-XO TELLURIDE

The **HSL16-LM Telluride**, the flagship directional from Auroralight. The HSL16 includes our Storm Drain™ lens drainage allowing water and dirt to wash away for optimal light transmission. Intended for use with open source MR16 sized LED lamps. The HSL16-XO is field convertible to our high performance LM16 "Designer Module" should the need arise. The Telluride features the Aurora Mount System (AMS™), which provides 360° of fixture rotation on over 8 unique mounting devices for precise aiming without compromising wire integrity. Offered in 2 versions: (LM, & XO) to meet the specific demands of our top tier customers.

Features include:

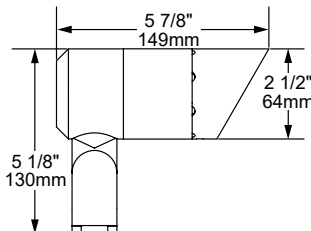
- Variety of MR16 Lamp Options
- 2700K (90 CRI) or 3000K (90 CRI)
- Storm Drain™ Lens Drainage System
- Aurora Mount System (AMS™) Compatible
- Solid Brass Construction
- Compatible with 4, 6, 8 or 12 Watts "Designer LED Module"



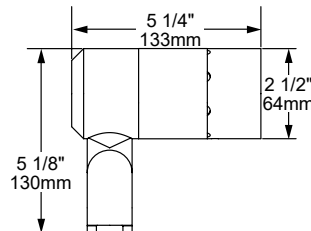
HSL16-XO-S-60-NG-BLP-XD



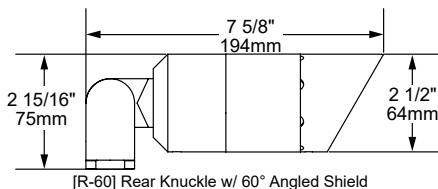
HSL16-XO-R-60-G-NAT



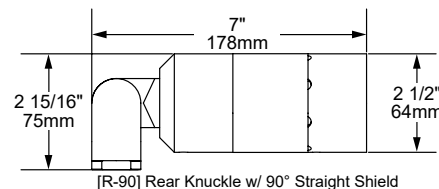
[S-60] Side Knuckle w/ 60° Angled Shield



[S-90] Side Knuckle w/ 90° Straight Shield



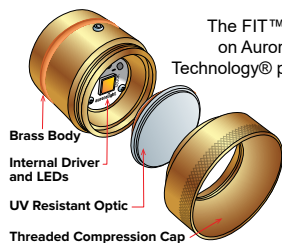
[R-60] Rear Knuckle w/ 60° Angled Shield



[R-90] Rear Knuckle w/ 90° Straight Shield



The FIT™ IP67 module is built on Auroralight's Copper Core Technology® platform and includes FIT™ Acrylic Optics.

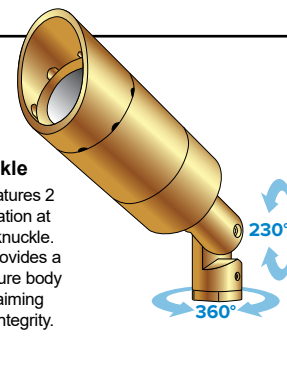
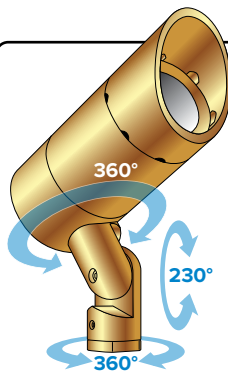


COPPER CORE TECHNOLOGY.



Side Knuckle vs Rear Knuckle

The Aurora Mount System (AMS™) features 2 axis of adjustment – 360° of fixture rotation at the mount and 230° at the solid brass knuckle. When paired with a side knuckle, this provides a 3rd axis of adjustment, up to 360° of fixture body rotation, for the ultimate in precision aiming without twisting or compromising wire integrity.

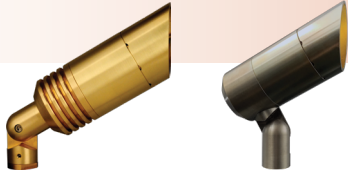


12V



SEE NEXT PAGE FOR ORDERING INFORMATION

HSL16-XO TELLURIDE



Prefix

ORDERING GUIDE: **HSL16-XO** H (HIGH PERFORMANCE) SL (SPOTLIGHT) 16 (SERIES) XO (NO LAMP)

☐ INDICATES REQUIRED FIELD ☐ INDICATES OPTIONAL FIELD ✓ INCLUDED IN BASE PRICE [_] QUICK SPEC (See Below)

QUICK SPEC SKU **HSL16-XO-S-50-NG-7-W-27-ARW-H-AGS-NAT**

HSL16-XO

KNUCKLE ✓
[R] Rear
[S] Side

SHIELD ✓
[NS] No Shield
[50] 50° Angled
[60] 60° Angled
[90] 90° Straight

BODY ✓
[G] Grooves
[NG] No Grooves

WATTAGE
[3] 3 Watts
[5] 5 Watts
[7] 7 Watts

OPTIC
[N] 15° Narrow
[M] 24° Medium
[W] 36° Wide
[WF] 60° Wide Flood
[SF] 120° Super Flood

LED COLOR
[27] 2700K, 90 CRI
[30] 3000K, 90 CRI

ACCESSORIES
[ARW-H] Hex Baffle
[ARW-L] Linear Spread
[ARW-F] Frost (Diffusion)

RISER

EXTENDABLE (EXTR):

- [5X10] 5x10"
- [7X14] 7x14"
- [9X18] 9x18"
- [11X22] 11x22"
- [18X36] 18x36"

SUBTERRANEAN (EXTENDABLE):

- (Mounts are not applicable with STR)
- [STR-12] 12" above grade 13 1/2" below
- [STR-18] 18" above grade 19 1/2" below

FIXED:

- [FR-4] 4"
- [FR-8] 8"
- [FR-12] 12"
- [FR-16] 16"
- [FR-18] 18"

90° & TEE OPTIONS:

Add **-90** (for 90°) or **-T** (for Tee) to any of the riser part numbers above.

NOTE: Risers are not compatible with AMS Mounts.

MOUNT

NO MOUNT:

- [1/2] 1/2" (NPS) Universal Thread ✓

GROUND:

- [AGS] AMS Ground Stake
- [2GS] Ground Stake w/ 2" Cap
- [3GS] Ground Stake w/ 3" Cap
- [325GS] Ground Stake w/ 3 1/4" Cap
- [DS] 9" Deluxe Spike
- [TR-12] 12" Trident Spike
- [JB3-S] 3" Junction Box w/ PVC Stake
- [PB-S] Power Box w/ PVC Stake Incl. w/ 60W 120-12V Trans.
- [PM-60-1] Concrete Pedestal Mount w/ 60W 120-12V Trans. (Single Hole/One Fixture)
- [PM-60-2] Concrete Pedestal Mount w/ 60W 120-12V Trans. (Double Hole/Two Fixtures)

TREE:

- [TS-HD-36] 36" AMS Tree Strap - Heavy Duty
- [BTM] Bolt-On Tree Mount
- [STM] Screw-In Tree Mount

SURFACE:

- [SMJB-1] Surface Mount J-Box (Single Hole/One Fixture) w/ 5 KO
- [SMJB-2] Surface Mount J-Box (Double Hole/Two Fixtures) w/ 5 KO
- [SM2] 2" Surface Mount
- [SM3] 3" Surface Mount
- [TM] AMS Trellis Mount
- [SB] AMS Splice Box

COVER PLATE:

- [CP35-BR] 3 1/2" Brass Cover Plate
- [CP14] 4" AMS J-Box Cover Plate
- [CP4-BR] 4" Brass Cover Plate
- [CP45-BR] 4 1/2" Brass Cover Plate
- [MC45-1] 4 1/2" Mount Canopy (Single Hole/One Fixture)
- [MC45-2] 4 1/2" Mount Canopy (Double Hole/Two Fixtures)
- [PC-60-1] 4 1/2" Power Canopy Incl. w/ 60W 120-12V Trans. (Single Hole/One Fixture)
- [PC-60-2] 4 1/2" Power Canopy Incl. w/ 60W 120-12V Trans. (Double Hole/Two Fixtures)

NOTE: Universal adapter included w/ fixture, except where AMS is noted. Most common configurations listed above; See Mount/Riser spec sheets for all options.

FINISH

STANDARD:

- [NAT] Natural ✓

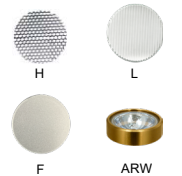
PLUS (\$):

- [BLP] Bronze Living Patina
- [BLP-XD] BLP Extra Dark

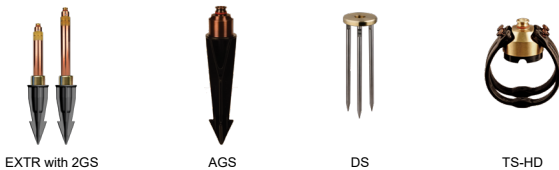
PREMIUM (\$\$\$):

- [NI] Nickel PVD
- [BG] Black Gloss PVD
- [BS] Black Satin PVD
- [BZ] Bronze PVD
- [BZ-XD] Dark Bronze PVD

ACCESSORIES



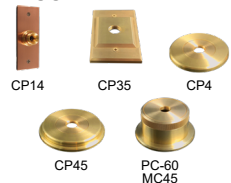
MOST POPULAR MOUNT OPTIONS



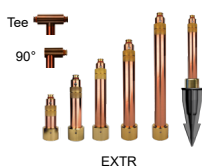
GROUND



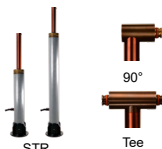
COVER PLATE



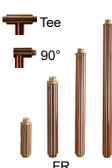
EXTENDABLE



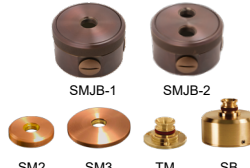
SUBTERRANEAN (EXTENDABLE)



FIXED



SURFACE



TREE

