



HSL20-LM OMEGA

The **HSL20-LM Omega** borrows the best features from over five generations of our classic workhorse SL16 series fixture. The all-new HSL20-LM directional luminaire features our new upgraded Copper Core LM16 designer module, which is coupled to a brass body providing superior heat dissipation, longer life, and high performance. The Storm Drain system has been combined with a flushing edge to expel debris. The new sleek and compact design is 30% lighter than our HSL16 Telluride; the Omega is an exceptional value; Offered in 2 versions: (LM, & XO) to meet the specific demands of our top tier customers.

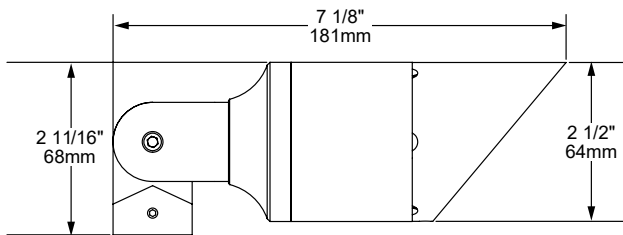
Features include:

- Interchangeable LED Module in 4, 6, 8 or 12 Watts up to 676 Lumens
- 6 Interchangeable PMMA Acrylic Optics from 20° to 75°
- 2700K (80 & 90 CRI), 3000K (80 CRI), or 4000K (80 CRI)
- Thermally Integrated® w/ Copper Core Technology®
- Storm Drain™ Lens Drainage System
- Aurora Mount System (AMS™) Compatible
- 12V Integral Constant Current Driver (Remote 12V AC/DC Transformer Required)
- Dimmable to <10% (TRIAC/Forward Phase) via Compatible Transformer
- Compatible w/ 12V AC/DC MLV or ELV Transformers
- Solid Brass Construction

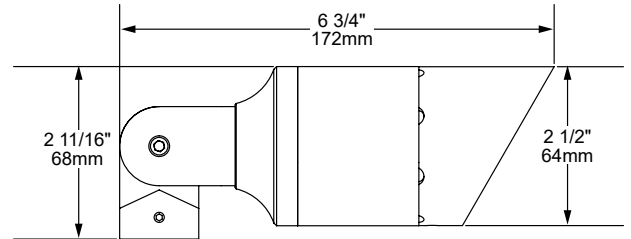


HSL20-LM-60-NI

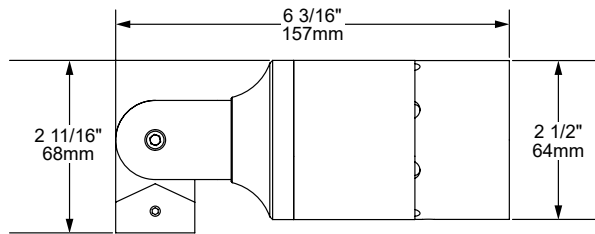
HSL20-LM-50-SBH-BLP
(w/ Optional SBH)



[50] 50° Angled Shield



[60] 60° Angled Shield



[90] 90° Straight Shield

FIT
FIELD-INTERCHANGEABLE
TECHNOLOGY

The FIT™ IP67 module is built on Auroralight's Copper Core Technology® platform and includes FIT™ Acrylic Optics.

Brass Body
Internal Driver and LEDs
UV Resistant Optic
Threaded Compression Cap

COPPER CORE TECHNOLOGY®

AMS
AURORA MOUNT SYSTEM

The Aurora Mount System (AMS™) features 2 axis of adjustment – 360° of fixture rotation at the mount and 230° at the solid brass knuckle. The ultimate in precision aiming without twisting or compromising wire integrity.

12V
THERMALLY INTEGRATED
CREE LED POWERED
STORM DRAIN
IP67

SEE NEXT PAGE FOR ORDERING INFORMATION



ORDERING GUIDE: **HSL20-LM** ^{Prefix} H (HIGH PERFORMANCE) SL (SPOTLIGHT) 20 (SERIES) L (LIGHT) M (MODULE)

☐ INDICATES REQUIRED FIELD ◌ INDICATES OPTIONAL FIELD ✓ INCLUDED IN BASE PRICE [_] QUICK SPEC (See Below)

QUICK SPEC SKU **HSL20-LM-50-8-W-27-SBH-AGS-NAT**

HSL20-LM

SHIELD ✓
[NS] No Shield
[50] 50° Angled
[60] 60° Angled
[90] 90° Straight

WATTAGE ✓
[4] 4 Watts
[6] 6 Watts
[8] 8 Watts
[12] 12 Watts

OPTIC
 STANDARD: ✓
[N] 20° Narrow
[M] 30° Medium
[W] 40° Wide
[WF] 50° Wide Flood
[SF] 60° Super Flood
[UF] 75° Ultra Flood
 PLUS (\$):
[A] All Optics Kit

LED COLOR ✓
[27] 2700K, 80 CRI
[279] 2700K, 90 CRI
[30] 3000K, 80 CRI
[40] 4000K, 80 CRI

NOTE: For other CCT and CRI options, contact factory

ACCESSORIES
 SELECT UP TO TWO:
[H] Hex Baffle
[L] Linear Spread
[P] Prismatic Lens
[MP] Micro Prismatic
[F] Frost (Diffusion)
[SBH] Stepped Baffle /Hex Baffle Assembly

RISER

EXTENDABLE (EXTR):

- [5X10]** 5x10"
- [7X14]** 7x14"
- [9X18]** 9x18"
- [11X22]** 11x22"
- [18X36]** 18x36"

SUBTERRANEAN (EXTENDABLE):
 (Mounts are not applicable with STR)

- [STR-12]** 12" above grade 13 1/2" below
- [STR-18]** 18" above grade 19 1/2" below

FIXED:

- [FR-4]** 4"
- [FR-8]** 8"
- [FR-12]** 12"
- [FR-16]** 16"
- [FR-18]** 18"

90° & TEE OPTIONS:

Add **-90** (for 90°) or **-T** (for Tee) to any of the riser part numbers above.

NOTE: Risers are not compatible with AMS Mounts.

MOUNT

NO MOUNT:

- [1/2]** 1/2" (NPS) Universal Thread ✓

GROUND:

- [AGS]** AMS Ground Stake
- [2GS]** Ground Stake w/ 2" Cap
- [3GS]** Ground Stake w/ 3" Cap
- [325GS]** Ground Stake w/ 3 1/4" Cap
- [DS]** 9" Deluxe Spike
- [TR-12]** 12" Trident Spike
- [JB3-S]** 3" Junction Box w/ PVC Stake
- [PB-S]** Power Box w/ PVC Stake Incl. w/ 60W 120-12V Trans.
- [PM-60-1]** Concrete Pedestal Mount w/ 60W 120-12V Trans. (Single Hole/One Fixture)
- [PM-60-2]** Concrete Pedestal Mount w/ 60W 120-12V Trans. (Double Hole/Two Fixtures)

TREE:

- [TS-HD-36]** 36" AMS Tree Strap - Heavy Duty
- [BTM]** Bolt-On Tree Mount
- [STM]** Screw-In Tree Mount

SURFACE:

- [SMJB-1]** Surface Mount J-Box (Single Hole/One Fixture) w/ 5 KO
- [SMJB-2-]** Surface Mount J-Box (Double Hole/Two Fixtures) w/ 5 KO
- [SM2]** 2" Surface Mount
- [SM3]** 3" Surface Mount
- [TM]** AMS Trellis Mount
- [SB]** AMS Splice Box

COVER PLATE:

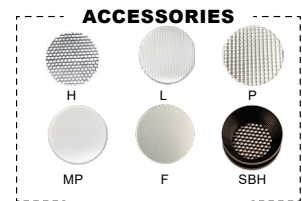
- [CP35-BR]** 3 1/2" Brass Cover Plate
- [CP14]** 4" AMS J-Box Cover Plate
- [CP4-BR]** 4" Brass Cover Plate
- [CP45-BR]** 4 1/2" Brass Cover Plate
- [MC45-1]** 4 1/2" Mount Canopy (Single Hole/One Fixture)
- [MC45-2]** 4 1/2" Mount Canopy (Double Hole/Two Fixtures)
- [PC-60-1]** 4 1/2" Power Canopy Incl. w/ 60W 120-12V Trans. (Single Hole/One Fixture)
- [PC-60-2]** 4 1/2" Power Canopy Incl. w/ 60W 120-12V Trans. (Double Hole/Two Fixtures)

NOTE: Universal adapter included w/ fixture, except where AMS is noted. Most common configurations listed above; See Mount/Riser spec sheets for all options.

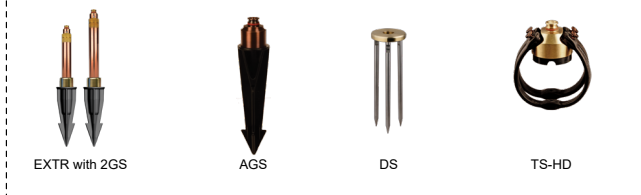
FINISH

STANDARD:

- [NAT]** Natural ✓
- PLUS (\$):
- [BLP]** Bronze Living Patina
- [BLP-XD]** BLP Extra Dark
- PREMIUM (\$\$\$):
- [NI]** Nickel PVD
- [BG]** Black Gloss PVD
- [BS]** Black Satin PVD
- [BZ]** Bronze PVD
- [BZ-XD]** Dark Bronze PVD



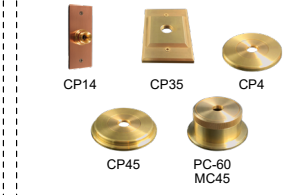
MOST POPULAR MOUNT OPTIONS



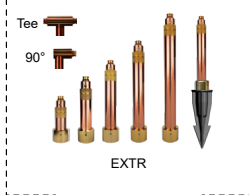
GROUND



COVER PLATE



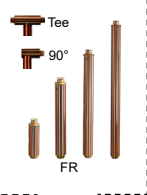
EXTENDABLE



SUBTERRANEAN (EXTENDABLE)



FIXED



SURFACE



TREE

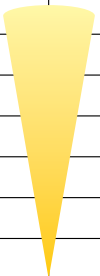


HSL20-LM OMEGA


PHOTOMETRIC OVERVIEW

To download more in-depth IES photometric data, visit auroralight.com/product/hsl20-lm-omega/

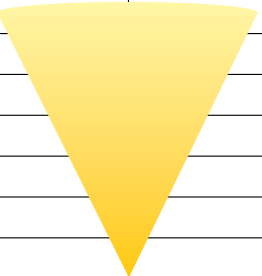
12 Watts 3000K 20° (NARROW) No Shield 549.7 LUMENS • CBCP 2010 • BUG B1 U0 G0 AURORALIGHT HSL20-LM-12-N-30		
30 FT	2.23	10.2
26 FT	2.97	8.87
22 FT	4.15	7.51
18 FT	6.20	6.14
14 FT	10.3	4.78
10 FT	20.1	3.41
6 FT	55.8	2.05
Distance From Fixture	Footcandles	Beam Width



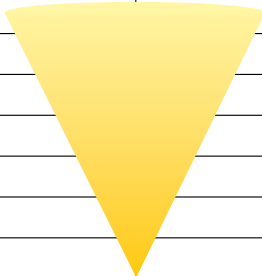
12 Watts 3000K 30° (MEDIUM) No Shield 610.9 LUMENS • CBCP 2136 • BUG B1 U0 G0 AURORALIGHT HSL20-LM-12-M-30		
30 FT	2.37	13.6
26 FT	3.16	11.8
22 FT	4.41	9.94
18 FT	6.59	8.14
14 FT	10.9	6.33
10 FT	21.4	4.52
6 FT	59.3	2.71
Distance From Fixture	Footcandles	Beam Width



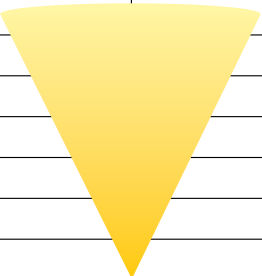
12 Watts 3000K 40° (WIDE) No Shield 676.8 LUMENS • CBCP 1375 • BUG B1 U0 G0 AURORALIGHT HSL20-LM-12-W-30		
30 FT	1.53	19.7
26 FT	2.03	17.1
22 FT	2.84	14.5
18 FT	4.24	11.8
14 FT	7.01	9.21
10 FT	13.7	6.58
6 FT	38.2	3.95
Distance From Fixture	Footcandles	Beam Width



12 Watts 3000K 50° (WIDE FLOOD) No Shield 668.9 LUMENS • CBCP 985 • BUG B1 U0 G0 AURORALIGHT HSL20-LM-12-WF-30		
30 FT	1.09	23.8
26 FT	1.46	20.6
22 FT	2.04	17.5
18 FT	3.04	14.3
14 FT	5.03	11.1
10 FT	9.85	7.94
6 FT	27.4	4.76
Distance From Fixture	Footcandles	Beam Width



12 Watts 3000K 60° (SUPER FLOOD) No Shield 628 LUMENS • CBCP 621 • BUG B1 U0 G0 AURORALIGHT HSL20-LM-12-SF-30		
30 FT	0.687	30.4
26 FT	0.914	26.3
22 FT	1.28	22.3
18 FT	1.91	18.2
14 FT	3.15	14.2
10 FT	6.18	10.1
6 FT	17.2	6.08
Distance From Fixture	Footcandles	Beam Width



12 Watts 3000K 75° (ULTRA FLOOD) No Shield 506.6 LUMENS • CBCP 416 • BUG B1 U0 G0 AURORALIGHT HSL20-LM-12-UF-30		
30 FT	0.462	34.5
26 FT	0.615	29.9
22 FT	0.859	25.3
18 FT	1.28	20.7
14 FT	2.12	16.1
10 FT	4.16	11.5
6 FT	11.5	6.90
Distance From Fixture	Footcandles	Beam Width

