



UL Verification Services Inc.
7036 Snowdrift Road
Allentown, PA 18106
610-774-1300



Photometric Test Report

Relevant Standards
IES LM-79-2008, ANSI C82.77-2002

Prepared For
Auroralight Inc

2742 Loker Ave W
#100
Carlsbad, CA 92010-6619
United States

Catalog Number
LDM3-360-30

Order Number

12790877

Test Number

12790877.20A

Revision of Test Number 12790877.20 on:

2021-06-18

Test Date

2019-04-05

Prepared By

Jesse Litchfield, Technician

Approved By

Alexa Lambert, Project Handler

The results contained in this report pertain only to the tested sample.
This report shall not be reproduced, except in full, without written approval of Underwriters Laboratories.
This report must not be used by the client to claim product certification, approval, or endorsement by
NVLAP, NIST, or any agency of the Federal Government.



Luminaire Description: Cylindrical brass housing with circular brass dome w/ 360° cutaway, clear glass lens and PVC sleeve
Lamp: One (1) Cree XP-L 3000K LED with 25° medium silicone optic
Mounting: Recessed

Luminaire



Luminaire Characteristics

Luminous Diameter: 1.50 in.
Luminous Height: 0.500 in.

Summary of Results

Roadway Classification:	Type VS, Very Long
Cutoff Classification:	Noncutoff
BUG Rating:	B0 U1 G0

Test Conditions

Test Temperature:	24.5 °C
Voltage:	12.03 VAC
Current:	0.4036 A
Power:	3.036 W
Power Factor:	0.625
Frequency:	60 Hz
Current THD:	89.9 %

Tested in 30 planes left side, 30 planes right side, left and right averaged
Vertical test increments are 2.5 degrees
Test distance exceeds five times the greatest luminous opening of luminaire

Laboratory results may not be representative of field performance
Ballast factors have not been applied



Distribution - Goniophotometer

Distribution Test Conditions

Temperature	Voltage	Current	Power	Power Factor	Frequency	Current THD
24.5 °C	12.03 VAC	0.4036 A	3.036 W	0.625	60 Hz	89.9 %

Summary of Results

Spacing Criteria

0-180: #N/A

90-270: #N/A

Total Lumen Output:

22.58 Lumens

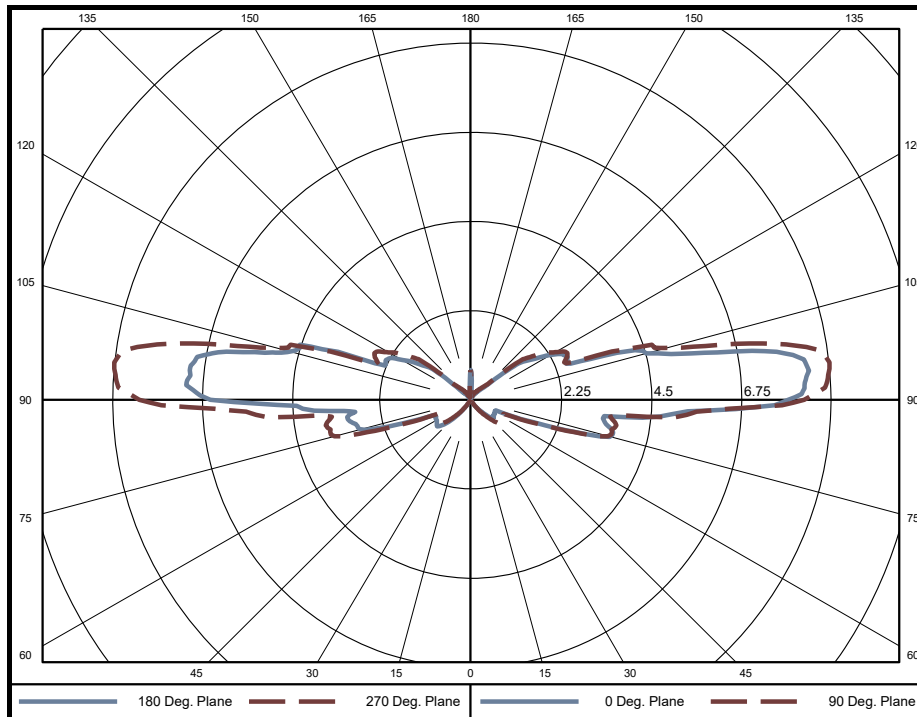
Luminaire Efficacy:

7.4 lm/w

Maximum Candela:

9 Candela

Polar Plot



Zonal Lumen Summary

Zone	Lumens	% of Luminaire	Zone	Lumens	% of Luminaire	Zone	Lumens	% of Luminaire
0-5	0	0.0%	60-65	0.361	1.6%	120-125	0.698	3.1%
5-10	0	0.0%	65-70	0.471	2.1%	125-130	0.489	2.2%
10-15	0	0.0%	70-75	1.072	4.7%	130-135	0.187	0.8%
15-20	0	0.0%	75-80	1.423	6.3%	135-140	0.091	0.4%
20-25	0	0.0%	80-85	1.494	6.6%	140-145	0.056	0.2%
25-30	0	0.0%	85-90	2.397	10.6%	145-150	0.035	0.2%
30-35	0.007	0.0%	90-95	3.337	14.8%	150-155	0.021	0.1%
35-40	0.054	0.2%	95-100	3.308	14.7%	155-160	0.011	0.0%
40-45	0.149	0.7%	100-105	2.391	10.6%	160-165	0.006	0.0%
45-50	0.267	1.2%	105-110	1.651	7.3%	165-170	0.005	0.0%
50-55	0.345	1.5%	110-115	0.985	4.4%	170-175	0.008	0.0%
55-60	0.355	1.6%	115-120	0.900	4.0%	175-180	0.009	0.0%

Zone	Lumens	% of Luminaire
0-40	0	0.3%
0-60	1	5.2%
0-90	8	37.2%
90-180	14	62.8%



Candela Tabulation
Horizontal Angle (Degrees)

Vertical Angle (Degrees)	0	22.5	45	67.5	90	112.5	135	157.5	180	202.5	225	247.5	270	292.5	315	337.5
	0	0.000	0.000	0.000	0.000	0.000	0.000	0.000	0.000	0.000	0.000	0.000	0.000	0.000	0.000	0.000
	5	0.000	0.000	0.000	0.000	0.000	0.000	0.000	0.000	0.000	0.000	0.000	0.000	0.000	0.000	0.000
	10	0.000	0.000	0.000	0.000	0.000	0.000	0.000	0.000	0.000	0.000	0.000	0.000	0.000	0.000	0.000
	15	0.000	0.000	0.000	0.000	0.000	0.000	0.000	0.000	0.000	0.000	0.000	0.000	0.000	0.000	0.000
	20	0.000	0.000	0.000	0.000	0.000	0.000	0.000	0.000	0.000	0.000	0.000	0.000	0.000	0.000	0.000
	25	0.000	0.000	0.000	0.000	0.000	0.000	0.000	0.000	0.000	0.000	0.000	0.000	0.000	0.000	0.000
	30	0.000	0.000	0.000	0.000	0.000	0.000	0.000	0.000	0.000	0.000	0.000	0.000	0.000	0.000	0.000
	35	0.155	0.063	0.000	0.075	0.150	0.075	0.000	0.063	0.155	0.063	0.000	0.075	0.150	0.075	0.063
	40	0.408	0.296	0.060	0.315	0.412	0.315	0.060	0.296	0.408	0.296	0.060	0.315	0.412	0.315	0.296
	45	0.649	0.585	0.278	0.610	0.658	0.610	0.278	0.585	0.649	0.585	0.278	0.610	0.658	0.610	0.585
	50	0.875	0.831	0.463	0.895	0.911	0.895	0.463	0.831	0.875	0.831	0.463	0.895	0.911	0.895	0.831
	55	0.871	0.845	0.507	0.905	0.898	0.905	0.507	0.845	0.871	0.845	0.507	0.905	0.898	0.905	0.845
	60	0.844	0.822	0.465	0.874	0.874	0.874	0.465	0.822	0.844	0.822	0.465	0.874	0.874	0.874	0.822
	65	0.818	0.813	0.427	0.852	0.883	0.852	0.427	0.813	0.818	0.813	0.427	0.852	0.883	0.852	0.813
	70	1.591	1.594	0.476	1.736	1.780	1.736	0.476	1.594	1.591	1.594	0.476	1.736	1.780	1.736	1.594
	75	3.239	3.061	0.579	3.356	3.546	3.356	0.579	3.061	3.239	3.061	0.579	3.356	3.546	3.356	3.061
	80	3.258	3.200	0.511	3.568	3.695	3.568	0.511	3.200	3.258	3.200	0.511	3.568	3.695	3.568	3.200
	85	3.977	3.827	0.436	4.707	5.107	4.707	0.436	3.827	3.977	3.827	0.436	4.707	5.107	4.707	3.827
	90	7.242	7.029	0.380	7.814	8.330	7.814	0.380	7.029	7.242	7.029	0.380	7.814	8.330	7.814	7.029
	95	7.782	7.627	0.514	8.478	8.992	8.478	0.514	7.627	7.782	7.627	0.514	8.478	8.992	8.478	7.627
	100	6.908	6.661	0.511	7.529	8.006	7.529	0.511	6.661	6.908	6.661	0.511	7.529	8.006	7.529	6.661
	105	4.621	4.345	0.594	4.712	5.030	4.712	0.594	4.345	4.621	4.345	0.594	4.712	5.030	4.712	4.345
	110	3.106	2.628	0.815	2.581	2.925	2.581	0.815	2.628	3.106	2.628	0.815	2.581	2.925	2.581	2.628
	115	2.492	2.065	0.797	2.292	2.669	2.292	0.797	2.065	2.492	2.065	0.797	2.292	2.669	2.292	2.065
	120	2.137	1.811	0.589	2.079	2.383	2.079	0.589	1.811	2.137	1.811	0.589	2.079	2.383	2.079	1.811
	125	1.641	1.442	0.313	1.761	1.944	1.761	0.313	1.442	1.641	1.442	0.313	1.761	1.944	1.761	1.442
	130	1.003	0.870	0.139	1.105	1.204	1.105	0.139	0.870	1.003	0.870	0.139	1.105	1.204	1.105	0.870
	135	0.333	0.265	0.030	0.451	0.491	0.451	0.030	0.265	0.333	0.265	0.030	0.451	0.491	0.451	0.265
	140	0.230	0.183	0.010	0.326	0.353	0.326	0.010	0.183	0.230	0.183	0.010	0.326	0.353	0.326	0.183
	145	0.157	0.121	0.000	0.232	0.254	0.232	0.000	0.121	0.157	0.121	0.000	0.232	0.254	0.232	0.121
	150	0.105	0.080	0.000	0.169	0.186	0.169	0.000	0.080	0.105	0.080	0.000	0.169	0.186	0.169	0.080
	155	0.069	0.049	0.000	0.116	0.128	0.116	0.000	0.049	0.069	0.049	0.000	0.116	0.128	0.116	0.049
	160	0.045	0.031	0.000	0.075	0.086	0.075	0.000	0.031	0.045	0.031	0.000	0.075	0.086	0.075	0.031
	165	0.047	0.032	0.000	0.061	0.068	0.061	0.000	0.032	0.047	0.032	0.000	0.061	0.068	0.061	0.032
	170	0.088	0.068	0.004	0.075	0.088	0.075	0.004	0.068	0.088	0.068	0.004	0.075	0.088	0.075	0.068
	175	0.260	0.243	0.145	0.225	0.232	0.225	0.145	0.243	0.260	0.243	0.145	0.225	0.232	0.225	0.243
	180	0.749	0.749	0.749	0.749	0.749	0.749	0.749	0.749	0.749	0.749	0.749	0.749	0.749	0.749	0.749

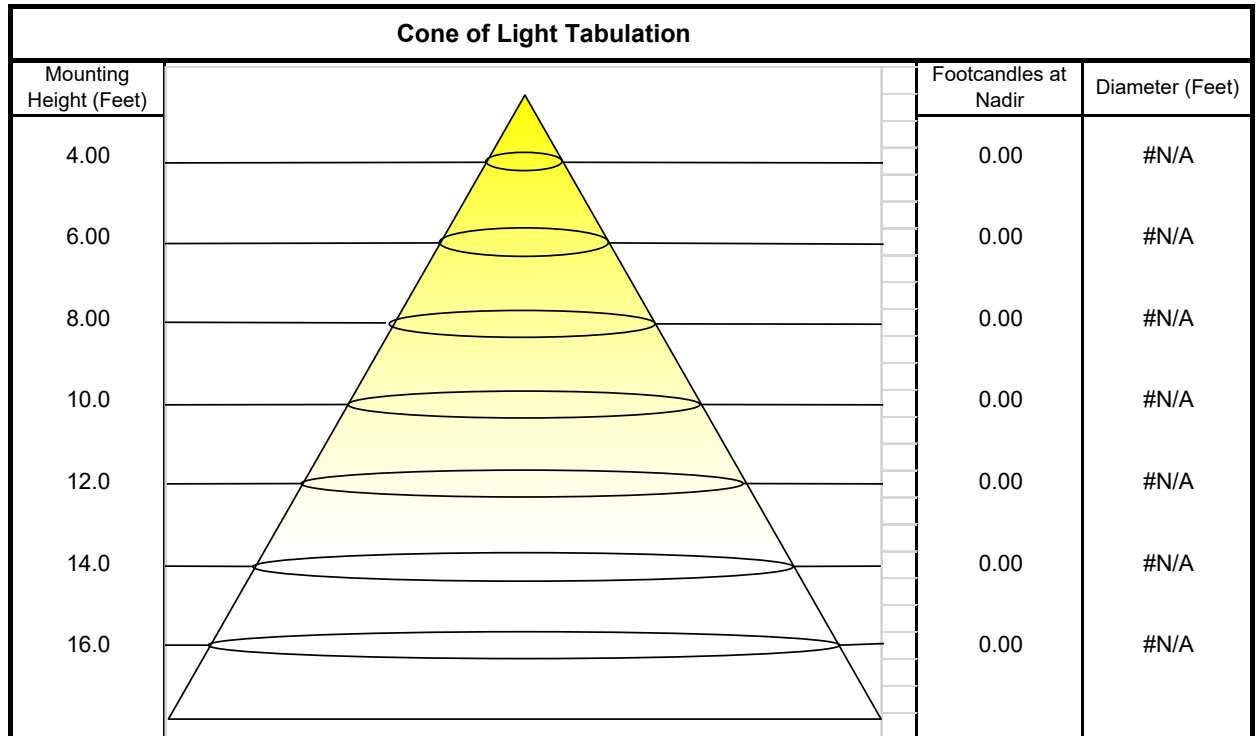
Average Luminance (cd/m²)

Vertical Angle (Degrees)	Horizontal Angle (Degrees)		
	0	45	90
	0	0	0
	45	875	374
	55	1118	651
	65	1044	545
	75	4256	761
	85	5564	611



Utilization of Lumens - Zonal Cavity Method

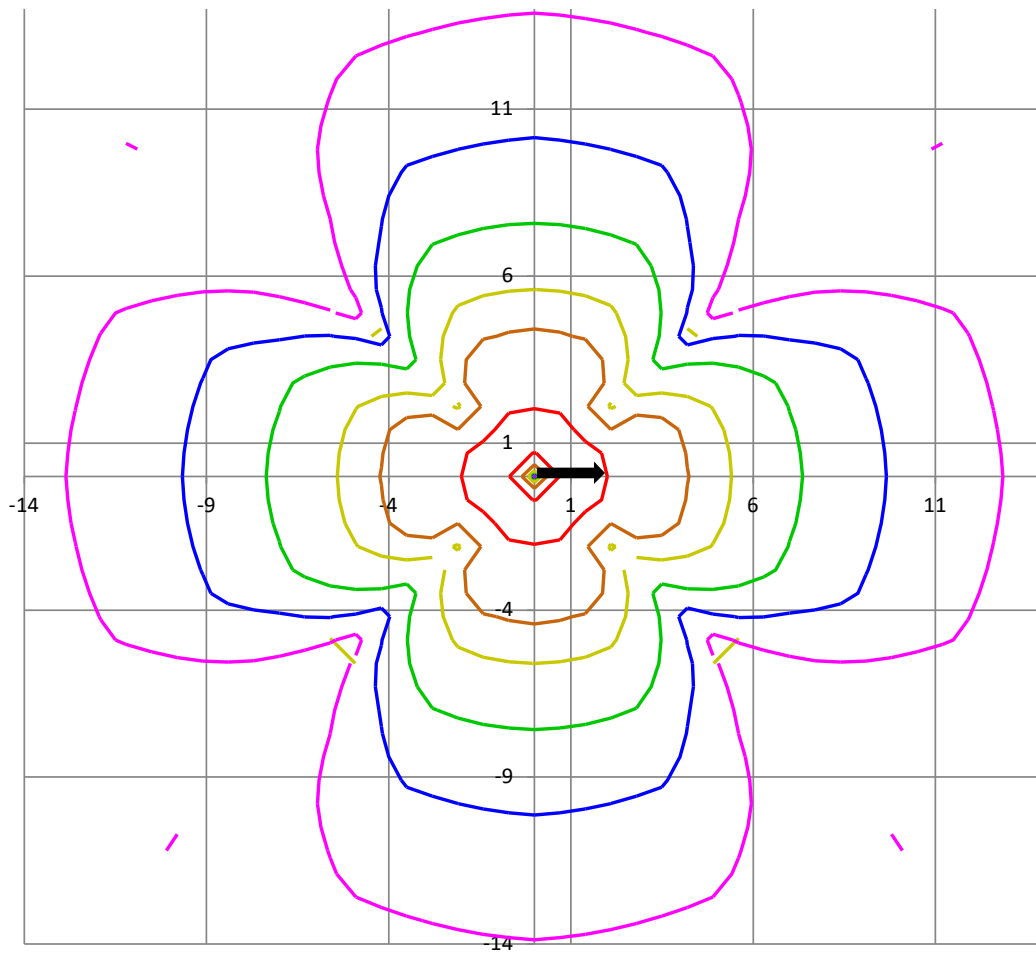
Effective Floor Cavity Reflectance 20%																		
Ceiling Cavity Reflectance	80				70				50			30			10			0
Wall Reflectance	70	50	30	10	70	50	30	10	50	30	10	50	30	10	50	30	10	0
Room Cavity Ratio (RCR)	** Values are expressed as Lumens delivered to the task surface **																	
0	24	24	24	24	21	21	21	21	17	17	17	13	13	13	10	10	10	8
1	20	18	16	15	18	16	15	13	12	11	10	9	8	8	6	5	5	3
2	17	15	13	11	15	13	11	10	10	9	8	7	6	5	5	4	3	2
3	16	13	11	9	14	11	9	8	9	7	6	6	5	4	4	3	2	1
4	14	11	9	7	12	10	8	6	7	6	5	5	4	3	3	2	2	1
5	13	10	8	6	11	9	7	5	7	5	4	5	4	3	3	2	1	0
6	12	9	7	5	10	8	6	4	6	4	3	4	3	2	3	2	1	0
7	11	8	6	4	10	7	5	4	5	4	3	4	3	2	2	2	1	0
8	10	7	5	4	9	6	5	3	5	3	2	3	2	2	2	1	1	0
9	9	6	5	3	8	6	4	3	4	3	2	3	2	1	2	1	1	0
10	9	6	4	3	8	5	4	3	4	3	2	3	2	1	2	1	1	0





ISOFootcandle Plot

Mounting Height - 2 Feet

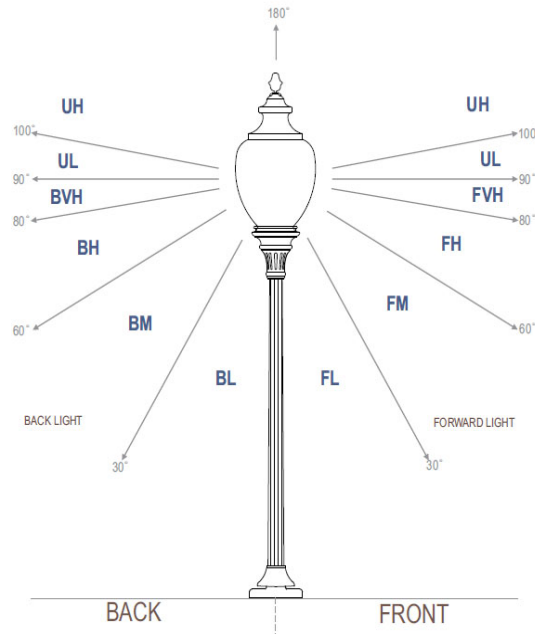


Grid Lines in Units of Mounting Height

0.02fc 0.01fc 0.005fc 0.002fc 0.001fc 0.0005fc



IES "BUG" Rating
(Back Light, Uplight, Glare)
Per IES TM-15-11



Luminaire Classification System (LCS)

LCS	Zone	Lumens	Luminaire %
FL	(0-30)	0.0	0.0%
FM	(30-60)	0.6	2.5%
FH	(60-80)	1.7	7.4%
FVH	(80-90)	2.0	8.7%
BL	(0-30)	0.0	0.0%
BM	(30-60)	0.6	2.5%
BH	(60-80)	1.7	7.4%
BVH	(80-90)	2.0	8.7%
UL	(90-100)	6.8	29.3%
UH	(100-180)	7.7	33.4%
Total		23.0	100.0%
BUG Rating	B0 U1 G0		



Attachment A

Amended Report Documentation

[illegible]