

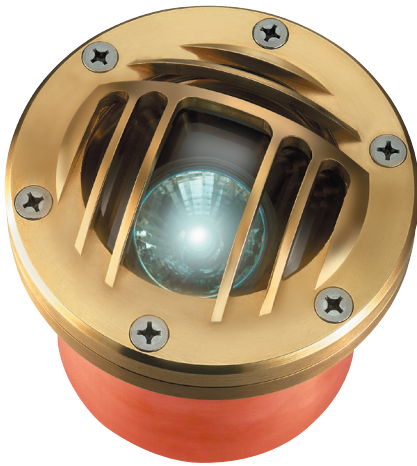


WL16 LIGHTHAUS

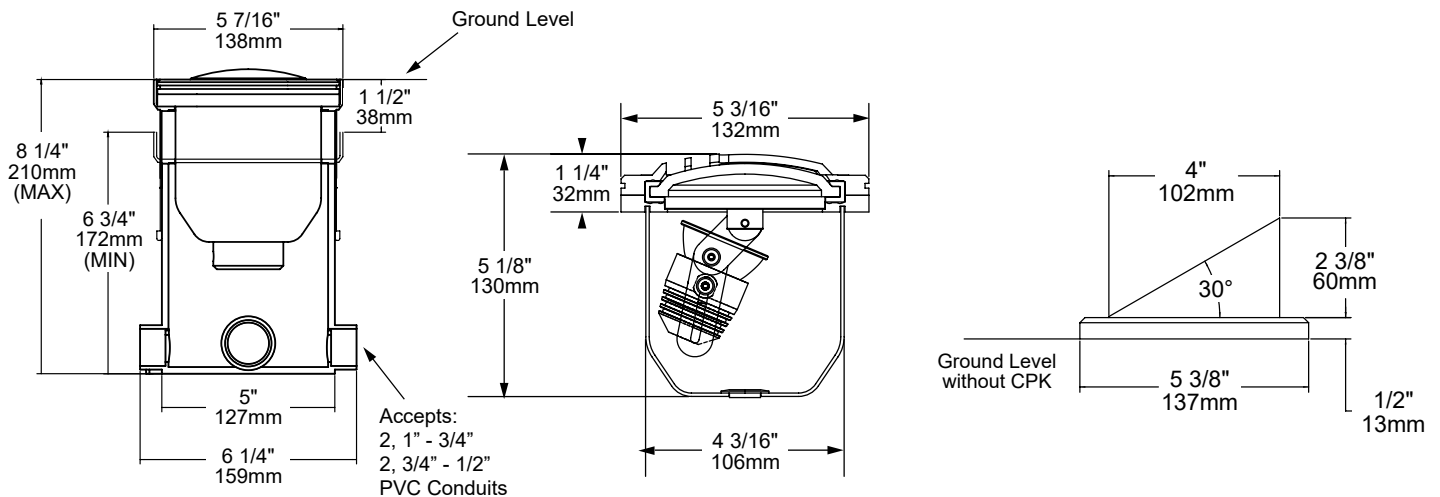
The **WL16 Lighthouse** well light features unrivaled aiming ability allowing excess of 45° tilt onto the horizon with 360° of rotation. It has the ability to regress the light source 2" below the lens, putting the WL16 completely in a class of its own. The WL16 will readily accept most any MR16 base Bi-Pin LED lamps, making it incredibly versatile by easily adapting for light intensity, beam spread, color temperature, and CRI. Ease of service and availability of replacement lamps globally add to the allure of this economical luminaire.

Features include:

- Variety of MR16 Lamp Options
- 3 Faceplate Options
- 2700K (90 CRI) or 3000K (90 CRI)
- Drive-over Rated up to 6,000 lbs.
- Solid Copper Body with Brass Faceplate and Stainless Steel Hardware



WL16-G-NAT

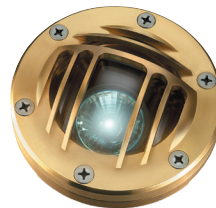


[FC] Flush w/ Convex Glass
w/ Optional [CPK]

[G] Grill

[GB] Glare Bezel
(Optional)

FACEPLATE OPTIONS



Grill

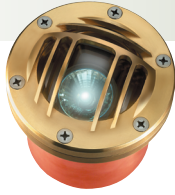


Flush



SEE NEXT PAGE FOR ORDERING INFORMATION

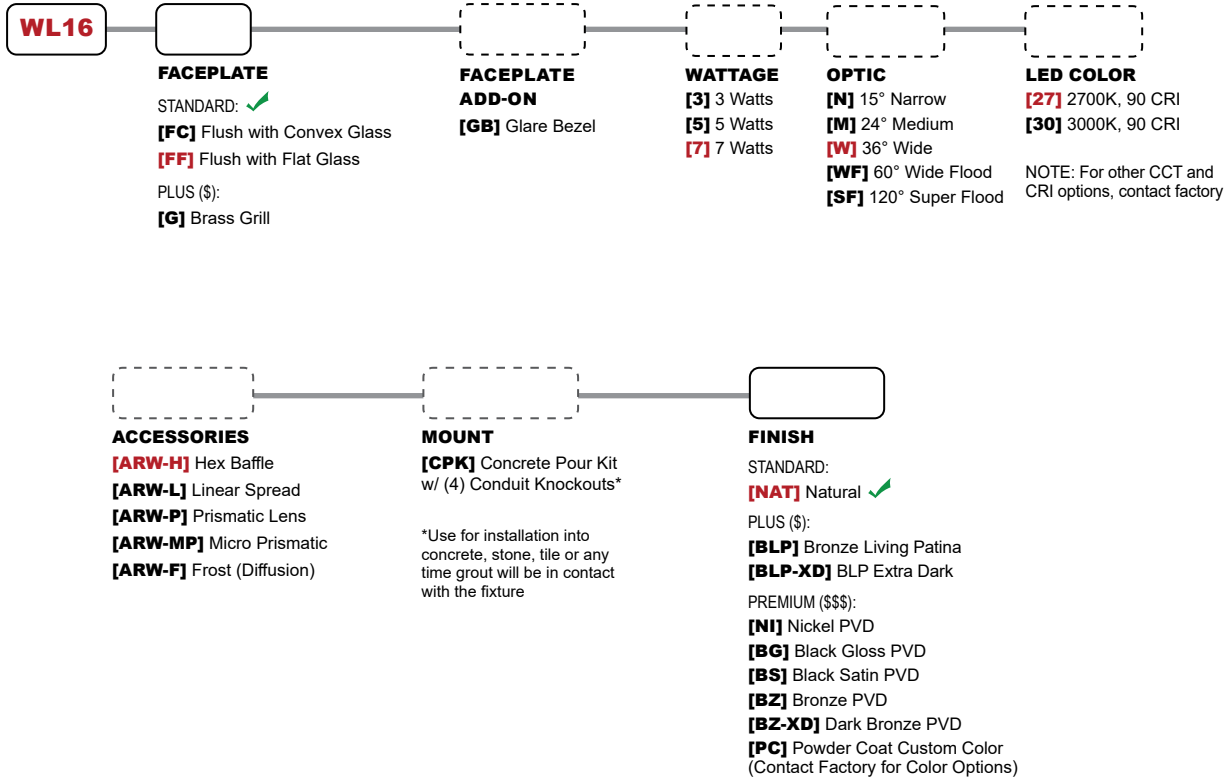
WL16 Lighthouse



ORDERING GUIDE: ^{Prefix} **WL16** WL (WELL LIGHT) 16 (SERIES)

□ INDICATES REQUIRED FIELD □ INDICATES OPTIONAL FIELD ✓ INCLUDED IN BASE PRICE [_] QUICK SPEC (See Below)

QUICK SPEC SKU **WL16-FF-7-W-27-ARW-H-NAT**

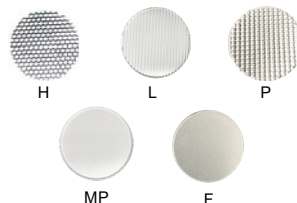


FACEPLATE ADD-ON



GB

ACCESSORIES



MP

F

MOUNT



CPK